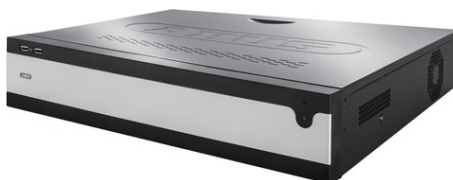


# 16-Channel PoE Network Video Recorder (NVR)

Art.-Nr. NVR10030P

Seite 1 von 3



The ABUS Network Video Recorder (NVR) reliably records video streams from up to 16 cameras. The ABUS NVRs stand out thanks to their simple and flexible operation and can be integrated into any project as a scalable recording solution.

## Convenient operation

When connected to the integrated PoE switch, this supplies the cameras with power and configures the network parameters. The cameras can be set up in the recorder in the blink of an eye thanks to the intuitive installation assistant, while the clear menu enables quick and easy programming. All ABUS cameras are deeply integrated via protocol and therefore offer full functionality.

## Free choice when operating

The local menu in the live view is easy to navigate and structured in a self-explanatory way. The recorder can also be accessed via web browser, ABUS CMS software or app if preferred.

## ABUS Link Station

The ABUS NVRs support the ABUS Link Station service. This allows easy set-up in the app; the NVR can be accessed from the Internet without cumbersome port forwarding. The service also offers a solution if the location only has an IPv6 Internet address.

## Technologies

- Live view and recording of up to 16 IP cameras @ 8 MPx (4K)
- High-performance network data throughput with up to 416 MBit/s (160 MBit/s in / 256 MBit/s out)
- Integrated PoE switch (max. 200 W) for power supply and fast operation of IP cameras
- Easy operation locally on the device, via web browser, ABUS CMS software or app
- Local monitor output supports up to 8 MPx (4K) resolution
- Manual or controlled recording according to time plan, motion detection, alarm input or VCA
- Supports H.264 and H.265 (incl. dynamic GOP)
- Recording on up to 4 SATA hard drives

# 16-Channel PoE Network Video Recorder (NVR)

Art.-Nr. NVR10030P

Seite 2 von 3

## Technical data - 16-Channel PoE Network Video Recorder (NVR)

AC voltage supply	100 – 240 V
Alarm inputs (NO/NC)	16
Alarming	Acoustic warning signal, on screen display signal, email, CMS, Alarm output
Analogue video channels	0
Audio	Line in: 1 x cinch (2.0 V s-s, 1000 $\Omega$ ) – only for network transmission, Audio Out: 2 x cinch (600 $\Omega$ )
Compatible with ABUS Link Station	Yes
Control	USB mouse
Dimensions	450 x 95 x 440 mm
HD-SDI video channels	0
HD-TVI video channels	0
Height	95 mm
IP video channels	16
Length	440 mm
Loi Sarkozy compliant (only valid for FR)	Yes
Max. humidity	90 %
Max. operating temperature	55 °C
Min. operating temperature	-10 °C
Mobile access	ABUS Link Station Lite / Pro (Apple iOS & Android)
Monitor outputs	1 x VGA, 1 x HDMI
Multi-monitor function	Yes
Net weight	1 kg
Network access	16 x RJ45 PoE (IEEE 802.3 af/at, max. 200 W) + 2 x RJ45 10/100/1000 Mbps
Network cameras	ABUS network cameras, 3rd party (abus.com), RTSP
Network functions	Live view, playback, data export, settings
Number of HDDs	4
Number of channels	16
Number of users	31
OSD language	English, German, French, Dutch, Danish
PTZ control	Over the network, RS-485 interface, control panel interface
Performance decoding (local live view & playback)	4 x 6 MPx / 8 x 3MPx / 16 x 1080p / 32 x 720p
PoE standard	IEEE 802.3 af/at (max. 200 W)
Power consumption	20 W
Power consumption incl. HDD	80 W
RAID	No
RS-485 interface	1

# 16-Channel PoE Network Video Recorder (NVR)

Art.-Nr. NVR10030P

Seite 3 von 3

## Technical data - 16-Channel PoE Network Video Recorder (NVR)

Recording duration at 1080p @ 2 Mbit/s	74 hours/TB
Recording duration at 6 MPx @ 8 Mbit/s	18 hours/TB
Recording modes	Manual, time schedule, motion detection, alarm input, VCA
Recording resolution @ frame rate per camera	12 MPx, 8 MPx, 6 MPx, 5 MPx, 4 MPx, 3 MPx, 2 MPx, 1080p, 720p, VGA @ 25 fps
Relay output	4 (Max. load: 12 V DC/1 A)
Resolution HDMI output	4K(3840x2160)/60Hz, 4K(3840x2160)/30Hz, 1920x1080/60Hz, 1600x1200/60Hz, 1280x1024/60 Hz, 1024x768/60 Hz
Resolution VGA output	1920x1080p/60Hz, 1280x1024/60Hz, 1280x720/60Hz, 1024x768/60Hz
Search modes	Event, date and time, Smart Search, VCA
Simultaneous network access	128 camera connections
Software	ABUS CMS software, integrated web server
Storage	2 x USB 2.0, 1 x USB 3.0
Storage medium	4 x S-ATA HDD (up to 16 TB per HDD)
Technology	IP
Total frame rate (PAL)	400 fps
Total network throughput (input/output)	416 MBit/s (160 MBits/256 MBits)
Total video channels	16
User levels	3
Video compression	MPEG-4, H.264, H.265 (incl. dynamic GOP)
Views	1 / 4 / 6 / 8 / 9 / 16
Watchdog hardware	Yes
Width	450 mm