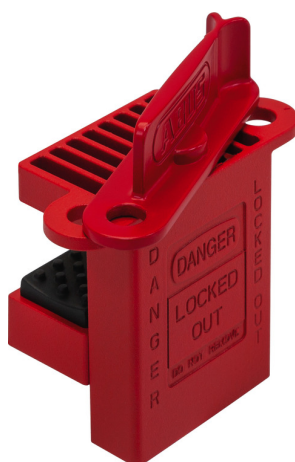


# V500 Universal Ball Valve Lockout Device

Seite 1 von 1



ALWAYS FITS: OUR UNIVERSAL VALVE LOCKOUT V500

Because valve handles come in countless different shapes.

Our V500 universal valve lock always fits because it can be attached to all different kinds of valve handles. How does it work? The clamping area surrounds the handle and has an adjustable height. That means it can fit on ball valves of all shapes and sizes. The valve lock ensures that there is a mounting point for a cable lock. This cable lock connects the valve handle through the mounting point to a fixed counterpoint so that the ball valve is fixed in place and protected against unauthorized access.

## Technical data - V500 Universal Ball Valve Lockout Device

|            |               |
|------------|---------------|
| Weight [g] | 170 g         |
| colour     | red           |
| EAN        | 4003318871511 |