



Security Tech Germany

ABUS

THIS IS MY COMFORT ZONE

Personal protective equipment – safety helmets, glasses & accessories



ABUS PERSONAL PROTECTIVE EQUIPMENT

04 \ SAFETY HELMETS
14 \ HELMET ACCESSORIES
22 \ SAFETY GLASSES



AUGUST BREMICKER SÖHNE KG

ABUS products are valued for their high quality all over the world, since the company has set a high standard during the 100 years of company history. Secure, reliable, strong – that's what the name ABUS stands for. This is also reflected in the company's **Home Security**, **Mobile Security** and **Commercial Security** divisions, which are constantly being further developed to meet the needs of private and commercial users. Due to the large product range, it does not matter if you are looking for a padlock to secure the shack in your garden or if you are on high sea. From suitable bike helmets for a family getaway or sponsoring international cycling teams, like Movistar to locking systems for the Ritz-Carlton in Berlin or the diamond tower in Dubai – ABUS has the innovative security solution.

PERSONAL PROTECTIVE EQUIPMENT

At ABUS, security is our top priority – and has been for a century now. By entering the field of personal protective equipment (PPE), we are transforming and reapplying our many years of expertise in manufacturing helmets for cycling and equestrian sports. This helmet expertise enables us to redefine safety helmets and take them to the next level by raising the bar in terms of comfort and design. Get ready to experience how we set new standards in terms of safety and reliability for industrial safety helmets!

You can choose the right equipment from a comprehensive range of high-quality accessories, such as eye, face and hearing protection, depending on your individual usecase. Trust ABUS and protect your most valuable resources. Your safety is our priority!





SAFETY HELMETS

ABUS SAFETY HELMET SPECTOR

Discover the future of industrial climbing with our sporty Spector industrial climbing helmet, which offers extreme comfort and is also trend-setting in terms of design. It sets new standards not only for work at height, but also on construction sites and in industry. The Spector is the premium model for your safety at work. Whether you are carrying out maintenance work on wind turbines or steering the excavator during demolition work – the Spector gives you a new experience of occupational safety.

The safety helmet has a robust ABS shell that offers maximum impact resistance and protection against falling objects. An EPS inner shell optimally absorbs shocks and is extremely comfortable on the head. Thanks to Active Padding and a breathable sweatband, wearing a helmet is comfortable even over long periods of time. An innovative and design-optimised helmet geometry with a low neck area is not only visible from the outside, but can also be felt by the wearer from the inside.

Sophisticated ventilation technology, inspired by our cycling helmet expertise, ensures optimum air circulation. Heat build-up is prevented and warm air is dissipated through channels in the EPS inner shell. Another innovative feature is the EasyFlex adjustment system, which makes the safety helmet multifunctional and individually adjustable through 360°. A rotary wheel enables precise adjustment of the headring, while an adjustable neck strap with a comfortable rear head support ensures a perfect and secure fit. The clips on the front and back of the helmet for attaching headlamps and full-vision glasses are a functional eye-catcher. Hearing protection can be attached to a side slot, the Euroslot with a width of 30 mm. There is also a slot to attach eye and face protection.

Please note: Use the red buckle for working at height. A black chin buckle is provided for all other activities on the ground. Switching between the two use cases is extremely simple: you simply replace the chin buckle without having to change the entire strap.



SPECTOR

Head protection in a class of its own

The Spector safety helmet is a fusion of functionality and a modern, unmistakable design – a result that sets new standards, especially when working at height.



- Maximum ventilation through openings in the honeycomb structure and deep ventilation channels*
- Robust ABS outer shell protects against falling objects and impacts, high-quality EPS inner shell, high protection against lateral forces (LD – lateral deformation)
- Accessory attachment allows it to be used in a variety of scenarios
- Modular side plate for visors and hearing protection (30 mm Euroslot)
- Deep neck area for increased protection
- Multifunctional and individually adjustable through 360° thanks to the EasyFlex adjustment system, rotary wheel for micrometric adjustment, neck strap with large, comfortable rear head support for a perfect and secure fit, adjustable chin strap
- Easily interchangeable buckles enables switching between standards
Black fastener -> EN 397
Red fastener -> EN 12492

Variant	PPE classification	Standards	Head circumference	Area of application
Spector: Ventilated	Category II	Spector: EN 397 (industrial safety helmet standard)	53cm – 63cm	Industry and manufacturing
Spector-E: Unventilated	Category III (hearing protection & Spector-E)	EN 12492 (mountaineering helmet standard) Spector-E: EN 50365 (Electrically insulating helmets for work on low-voltage installations) EN 397 (industrial safety helmet standard)		Energy generation and supply Construction and building industry Agriculture and horticulture Forestry and wood processing

Item no.	Item description	Variant	Colour
99773	SPECTOR	ventilated	titan
99775	SPECTOR	ventilated	polar white
38281	SPECTOR	ventilated	signal yellow
94800	SPECTOR	ventilated	signal orange
38477	SPECTOR	ventilated	core blue
41392	SPECTOR	ventilated	blaze red
99774	SPECTOR-E	unventilated	titan
99776	SPECTOR-E	unventilated	polar white
94802	SPECTOR-E	unventilated	signal yellow
38479	SPECTOR-E	unventilated	signal orange
41394	SPECTOR-E	unventilated	core blue
94803	SPECTOR-E	unventilated	blaze red



- *Applies to Spector. Spector-E is unventilated in accordance with EN 50365
- Soft, breathable padding and pleasant air circulation
- Easyflex adjustment system with 360° size adjustment enables fine adjustment via the rotary wheel at the back of the head and height adjustment via a multi-stage system for optimum adaptation to the shape of the head
- EPS in the inner shell offers optimum fit, comfort and safety
- Rear headrest for a perfect and secure fit

SCATOR



SCATOR

Head protection you can rely on

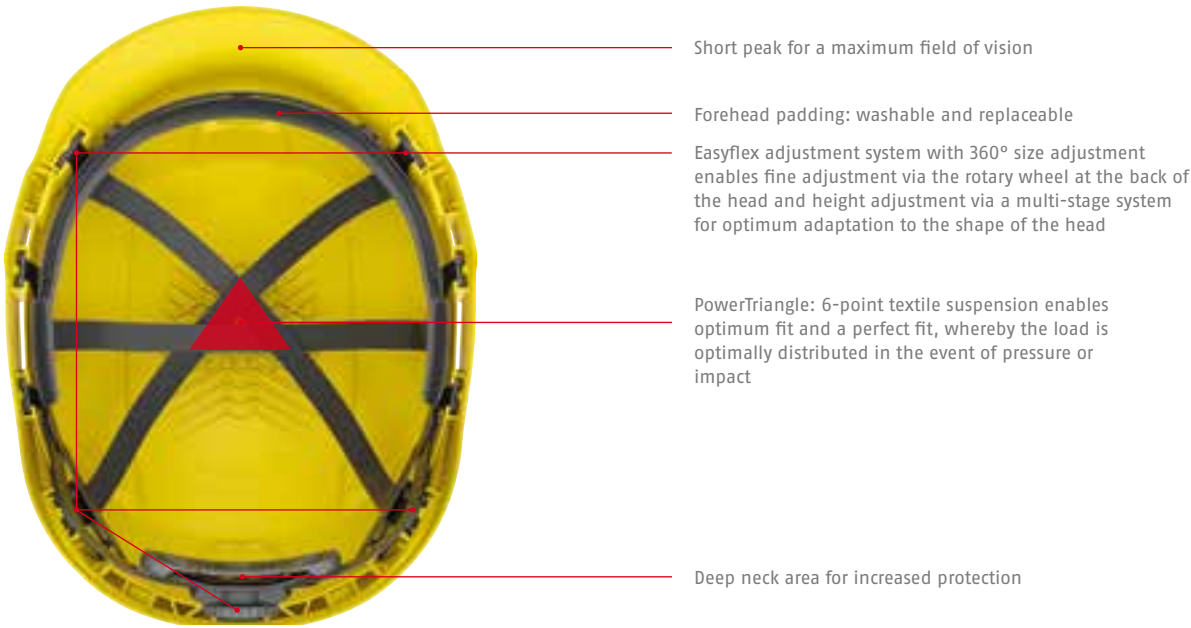
The Scator is an excellent safety helmet for use on the ground. As a construction helmet or occupational safety helmet, it is the perfect companion if you want to protect your head from falling objects and impacts.



- Side and rear openings for maximum heat dissipation and ventilation
- Accessory attachment allows it to be used in a variety of scenarios
- ABS shell for reinforced protection
- 30 mm Euroslot mount for hearing protection
Separate slot for visors
- Easyflex adjustment system rotary wheel for 360° size adjustment

Variant	PPE classification	Standards	Head circumference	Area of application
Scator: Ventilated	Category II	Scator: EN 397 (industrial safety helmets)	53cm – 63cm	Industry and manufacturing Energy generation and supply Construction and building industry Agriculture and horticulture Road construction and civil engineering Forestry and wood processing
Scator-E: Unventilated	Category III (hearing protection & Spector-E)	Scator-E: EN 397 (industrial safety helmets) EN 50365 (Electrically insulating helmets for work on low-voltage installations)		

Item no.	Item description	Variant	Colour
38481	SCATOR	ventilated	polar white
41396	SCATOR	ventilated	safety yellow
94805	SCATOR	ventilated	safety orange
38482	SCATOR	ventilated	core blue
41397	SCATOR	ventilated	blaze red
94806	SCATOR-E	unventilated	polar white
38483	SCATOR-E	unventilated	safety yellow
41398	SCATOR-E	unventilated	safety orange
94807	SCATOR-E	unventilated	core blue
38484	SCATOR-E	unventilated	blaze red



- Short peak for a maximum field of vision
- Forehead padding: washable and replaceable
- Easyflex adjustment system with 360° size adjustment
enables fine adjustment via the rotary wheel at the back of the head and height adjustment via a multi-stage system for optimum adaptation to the shape of the head
- PowerTriangle: 6-point textile suspension enables optimum fit and a perfect fit, whereby the load is optimally distributed in the event of pressure or impact
- Deep neck area for increased protection

HELMET ACCESSORIES



HALF VISOR



- Robust material: the polycarbonate lens offers robust eye coverage and comprehensive protection, scratch-resistant to external influences and abrasion-resistant, high impact resistance even at extreme temperatures
- Clear view: The visor is permanently fog-free on the inside
- Effective lens design: Wide-angle lens for optimum protection and a clear view, the visor can be worn over prescription glasses
- Optimum fit: Individual height adjustability and maximum freedom of movement
- Modularity: The half visor and the earmuffs can be worn simultaneously thanks to separate slots and are compatible with each other
- Easy installation possible thanks to push button and adapter
- Optical class 1
- Standards: EN 166 and EN 172 (tinted only)
- The matching visor adapters are included in the scope of delivery and do not need to be ordered separately

Item no.	Item description	Compatibility
38791	Clear visor	Scator(-E)
41701	Tinted visor	Scator(-E)
99953	Clear visor	Spector(-E)
99954	Tinted visor	Spector(-E)

FULL VISOR



- Robust material: Metal mesh visor (rustproof) and polycarbonate visor, reinforced frame to protect against debris
- Effective protection: Large-area coverage of the eyes and face, mesh full visor can be worn over prescription glasses
- Optimum fit: Individual height adjustability and maximum freedom of movement
- Modularity: The full visors and earmuffs can be worn simultaneously thanks to separate slots and are compatible with each other
- Easy to install: Lens installation or replacement thanks to adapter with push button
- CE ISO 16321-1:2021 (polycarbonate)
 - Anti-fog & anti-scratch coating
- CE ISO 16321-3:2021 (metal mesh)
 - Particularly suitable for forestry, gardening and landscaping
 - Breathable thanks to very small ventilation openings
- The matching visor adapters are included in the scope of delivery and do not need to be ordered separately

Item no.	Item description	Compatibility
41702	Clear face shield	Scator(-E)
38792	Mesh face shield	Scator(-E)
94809	Clear face shield	Spector(-E)
38486	Mesh face shield	Spector(-E)

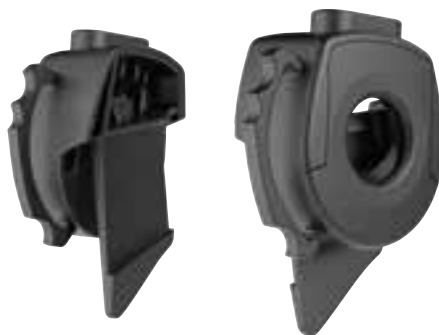
VISOR PROTECTOR



- A visor protector can prevent the half visor from being damaged by scratches and other external influences
- Increases the durability of the visor
- Includes slot for attaching a headlamp

Item no.	Item description	Compatibility
94863	Visor protector	Spector(-E)

VISOR ADAPTER



- The matching visor adapters are included in the scope of delivery for the visors and do not need to be ordered separately
- Indispensable for attaching visors to ABUS safety helmets
- Enables quick and easy visor changes
- Accessories such as visors and face protection can be quickly attached before or during work using the push button

Item no.	Item description	Compatibility
41453	Visor adapter	Spector(-E)
94867	Visor adapter	Scator(-E)

NECK PROTECTION



- Neck protection made of textile (polyester) with reflective stripes
- Easy installation thanks to click fasteners to attach the neck guard to the back of the helmet
- Reliable UV protection
- Colour variants: Hi-Viz Yellow / Hi-Viz Orange

Item no.	Item description	Compatibility
38537	Neck protector orange	Spector(-E) / Scator(-E)
41450	Neck protection yellow	Spector(-E) / Scator(-E)

CHIN STRAP



- Innovative 4-point fork chin strap with 2 buckles depending on use: Black chin buckle for EN 397 / Red chin buckle for EN 12492
- Easily switch between standards
- Replacement accessories for Spector(-E)
- Accessories for Scator(-E) (EN 397 black chin buckle)
- Lateral divider (adjustment point)

Item no.	Item description	Compatibility
41451	Chin strap	Spector(-E)
94865	Chin strap	Scator(-E)

EARMUFFS



- Reliable hearing protection for noise reduction: H (dB) 35 / M (dB) 29 / L (dB) 22 / SNR (dB) 31
- Attaching to the 30 mm Euroslot: The earmuffs are firmly attached to the side slot on the safety helmets so that they cannot slip.
- Length-adjustable band: Stepless band positioning
- Outstanding wearing comfort: Soft, wide padding (memory foam) reduces pressure on the ears, the outer ear is completely enclosed
- Practical handling: The earmuffs can be moved quickly and easily into the desired position (360-degree rotation)
- Earmuffs in accordance with DIN EN 352-3 (PPE category III)
- Compatible with all ABUS safety helmets in medium and large sizes

Item no.	Item description	Compatibility
41400	Hearing protection	Spector(-E) / Scator(-E)

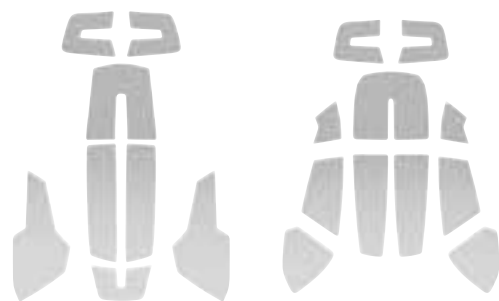
PADDING SET



- Washable and replaceable
- Excellent moisture regulation (absorption and release)
- Exceptionally comfortable to wear
- Less moisture is better in hot and cold weather
- Easy to fit thanks to Velcro fasteners

Item no.	Item description	Compatibility
94866	Padding set	Spector(-E)
38540	Forehead padding	Scator(-E)

REFLECTIVE STICKERS



- High visibility and reflection
- Self-adhesive
- A description of how to apply the stickers is enclosed with the product

Item no.	Item description	Compatibility
38539	Reflective stickers	Spector(-E)
41450	Reflective stickers	Scator(-E)

HELMET & GLASSES BAG



- Protective helmet bag inside made of protective fleece
- Safety helmet bag can be closed with a drawstring
- Colour: black
- Fabric of the glasses bag made of microfibre material
- Protects the helmet or goggles during transport

Item no.	Item description	Compatibility
38538	Helmet bag	Spector(-E) / Scator(-E)
94808	Glasses bag	Universal

BUSINESS CARD HOLDER



- Enables quick identification
- Easy to attach to the helmet
- Provides effective rain protection

Item no.	Item description	Compatibility
94864	Business card holder	Spector(-E) / Scator(-E)

GLASSES STRAP



- Textile strap with flexibly adjustable eyelets for different temple sizes

Item no.	Item description	Compatibility
38485	Glasses strap	Universal



SAFETY GLASSES

OCUDO

Sporty and dynamic design



- Half-frame safety glasses made from hard-wearing polycarbonate, streamlined temple design
- Robust material: Polycarbonate lens provides reliable protection while offering all-round visibility, UV protection 99.99%, antistatic
- Innovative safety glasses technology: Premium ABUS VisiLens coating, extremely scratch-resistant and permanently fog-free
- NK-certified, shock-absorbing, high impact resistance
- Highly comfortable temples: lightweight polycarbonate material for all-day comfort, close-fitting, flexible and soft, non-slip without causing pressure points
- Optimum fit: anatomically shaped nose area with soft nose pad for ideal fit and comfort
- Optical class 1
- Clear variant: Standard: EN 166 / EN 170 / ANSI Z87.1
- Tinted variants: Standard: EN 166 / EN 172 / ANSI Z87.1

Item no.	Item description	Colour
99703	OCUDO clear	velvet black-grey
99704	OCUDO tinted	velvet black-grey

XACTO

Sporty and comfortable



- Modern design: Frameless temple glasses made from hard-wearing polycarbonate, completely metal-free
- High wearing comfort: lightweight polycarbonate material for all-day comfort, close-fitting, non-slip and ergonomic
- Highly flexible temples: extremely comfortable temples thanks to ultra-flexible and soft material
- Robust material: Polycarbonate lens offers optimum eye coverage and comprehensive protection, UV protection 99.99%, antistatic
- Innovative safety glasses technology: Premium ABUS VisiLens coating, extremely scratch-resistant and permanently anti-fog, NK-certified, shock-absorbing, high impact resistance
- Optical class 1
- Clear variant: Standard: EN 166 / EN 170 / ANSI Z87.1
- Tinted variants: Standard: EN 166 / EN 172 / ANSI Z87.1
- Accessories: Foam frame, additional protection against flying objects and dust (effective, easy to install) with rubber strap

Item no.	Item description	Colour
99700	XACTO clear	velvet black-grey
99701	XACTO tinted	velvet black-grey
41399	Foam frame	black

PROTEO

The goggles for professionals



- Effective lens design: Robust wide-angle lens with 180° view for an unrestricted field of vision and sufficient space to wear the safety glasses over regular glasses
- Robust material: Polycarbonate lens provides robust eye protection, UV protection 99.99%, antistatic
- Innovative safety glasses technology: Premium ABUS VisiLens coating, extremely scratch-resistant and permanently anti-fog, NK-certified, shock-absorbing, high impact resistance
- Optimum fit: Frame and temples made of hard-wearing polycarbonate with soft thermoplastic rubber offer ultimate impact protection and high comfort, temples can be flexibly adjusted in length and angle, pressure points are prevented
- Optical class 1
- Standard: EN 166 / EN 170 / ANSI Z87.1
- Perfect fit, even for glasses wearers

Item no.	Item description	Colour
99707	PROTEO clear	velvet black-grey

DAPTEO

Perfect protection



- Effective lens design: Robust wide-angle lens with 180° view for an unrestricted field of vision and sufficient space to wear the safety glasses over regular glasses
- Robust material: Polycarbonate lens provides robust eye protection, UV protection 99.99%, antistatic
- Innovative safety glasses technology: Premium ABUS VisiLens coating, extremely scratch-resistant and permanently anti-fog, NK-certified, shock-absorbing, high impact resistance
- Optimum fit: Frame and temples made of hard-wearing polycarbonate with soft thermoplastic rubber offer ultimate impact protection and high comfort, temples can be flexibly adjusted in length and angle, pressure points are prevented
- Optical class 1
- Standard: EN 166 / EN 170 / ANSI Z87.1
- Perfect fit, even for glasses wearers

Item no.	Item description	Colour
99705	DAPTEO clear	velvet black-grey

ABUS PERSONAL PROTECTIVE EQUIPMENT



ABUS | August Bremicker Söhne KG

Altenhofer Weg 25
58300 Wetter
Tel.: 02335 - 634 0
Fax: 02335 - 634 300
safety@abus.com
abus.com

Our general terms and conditions apply. Technical and colour specifications subject to change without prior notice.
We assume no liability for mistakes and printing errors. ©ABUS 10/2024

