



Security Tech Germany

**BRAVUS.3500 MX MAGNET**

**HIGH-END-  
SECURITY**

REVERSIBLE KEY SYSTEM

# HIGH-END SECURITY

Bravus.3500 MX Magnet



## HIGH-END SECURITY

The Bravus.3500 MX Magnet offers the highest level of security – thanks to the integrated magnet technology, SKG\*\*\* security certification as standard, technical copy protection, patent protection until 2038\* and trademark protection.

The independent SKG testing institute has certified the Bravus MX magnetic Euro profile cylinders in the highest security class, SKG\*\*\*. The magnetic cylinder also achieves the highest security level in the categories of lock security, durability, corrosion resistance, fire resistance and pick resistance.

## HIGH-END KEY COPY PROTECTION

The intelligent magnet technology and the patented Intellitec system on the key and in the cylinder effectively prevent the lock from being operated using unauthorised keys. As a result, the Bravus MX Magnet provides reliable protection against illegal 3D key copies.

The security card provides additional protection as this must be presented before additional cylinders and keys can be ordered.

## HIGH-END LOCKING CONVENIENCE

The Bravus MX Magnet keeps you on trend. The innovative shape of the key makes it almost unnoticeable in a trouser pocket. Even in the dark, you can open the door with ease using the convenient reversible key. The modern, solid key does not snap and is made from a low-wear material to ensure long-term security.

## MAXIMUM FLEXIBILITY

Moving house? Installing a new door? Making changes to your organisational structure? No problem! The magnetic cylinder has a modular design and can be quickly lengthened or shortened to match the thickness of your new door, allowing you to react flexibly to changes.

## A SAFE PLAY OF COLOURS

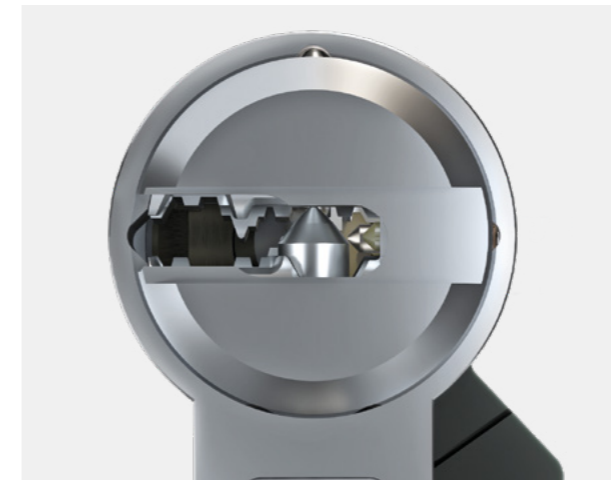
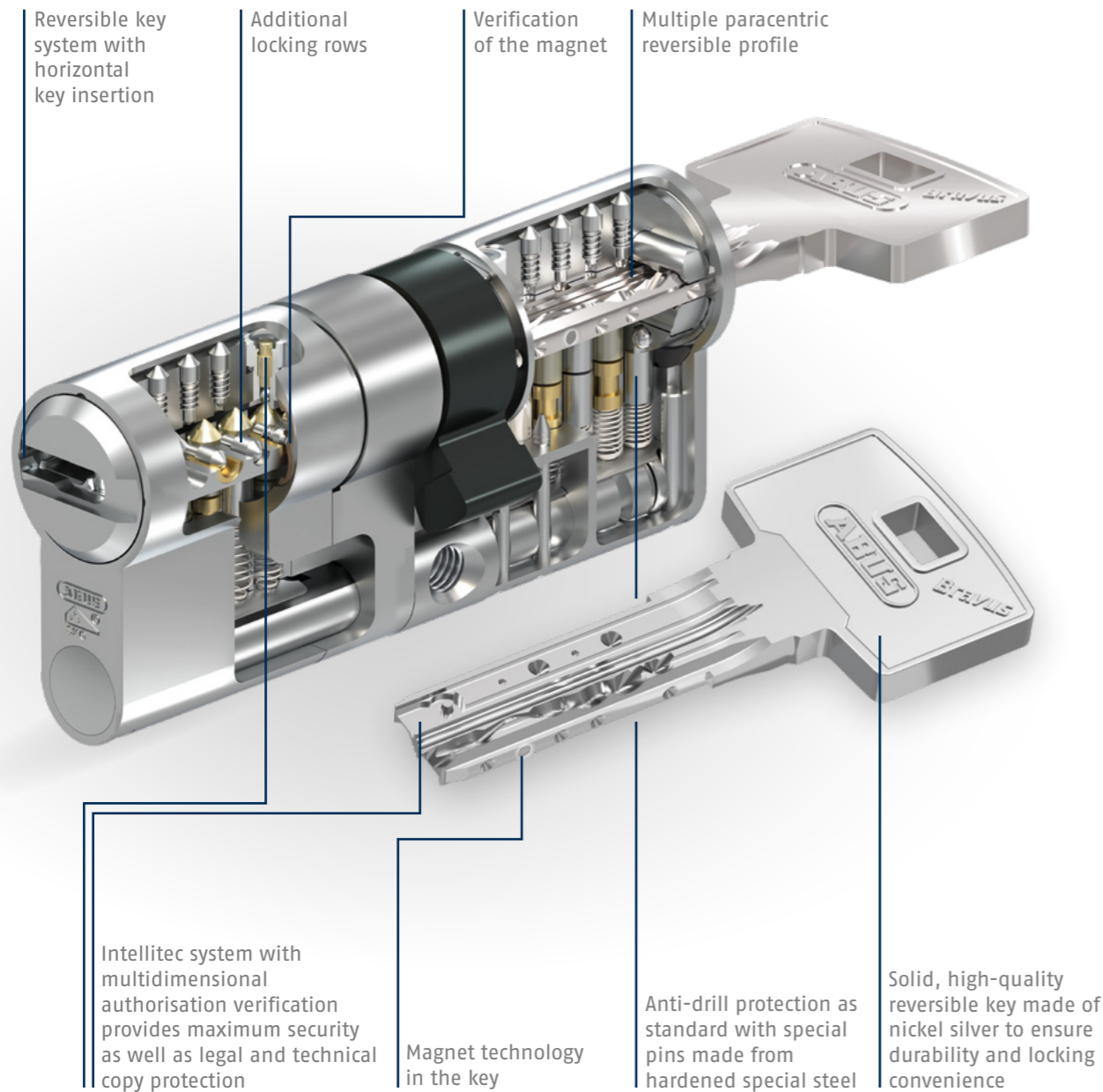
The variant with the Pro Cap key cap offers a wide range of colours to underline individuality. Choose your favorite colour from nine shades. Due to the colour coding, the keys can be distinguished at first glance. The search for keys is a thing of the past. Or indicate group permissions for your object using different colours. This allows you to control exactly who has access to which area.



\* pending, max. patent term to 2038

# BRAVUS.3500 MX MAGNET

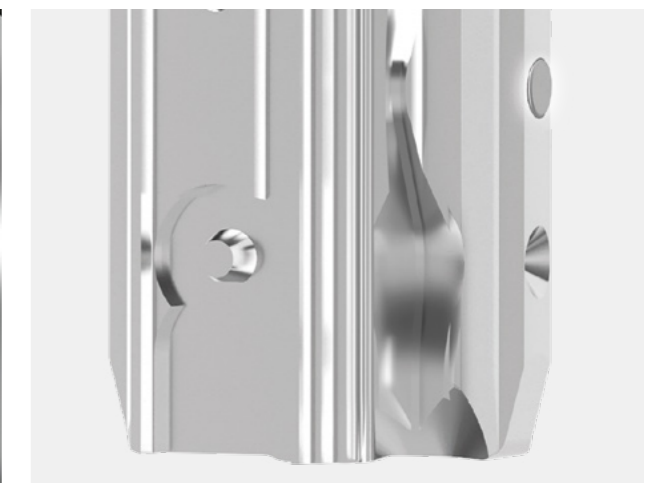
In detail



The modern reversible key system with horizontal key insertion is convenient and comfortable to use. The high-quality precision profile ensures easy insertion.



The innovative shape of the key makes it almost unnoticeable in a trouser pocket. The modern, solid key does not snap. For colour coding, you can choose the key variant with the high-quality Pro Cap in nine different colours.

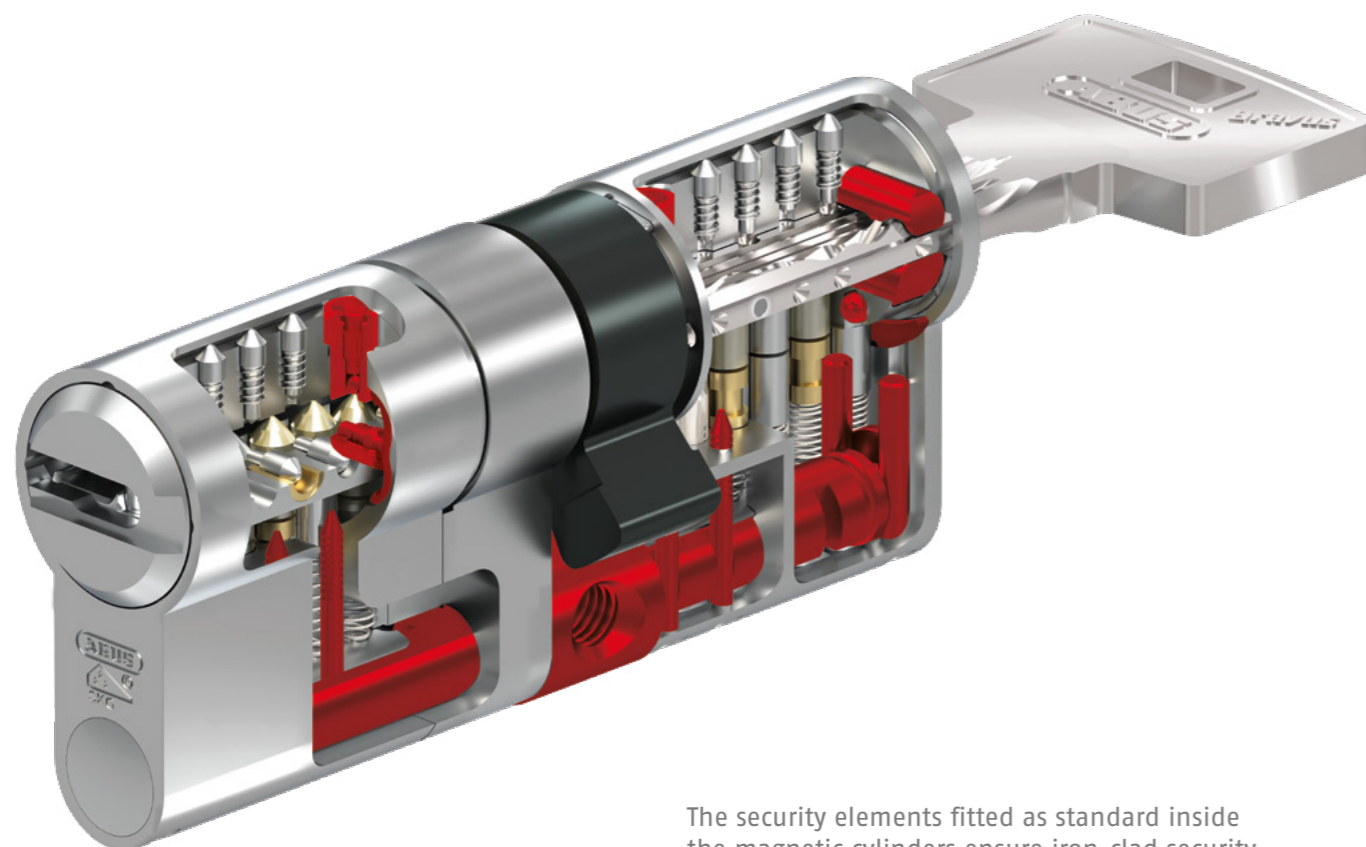


The Bravus MX Magnet locking system includes innovative magnet technology and the patented Intellitec system\* in the cylinder and key. With multidimensional authorisation verification, it offers extremely effective protection against illegal key copies and manipulation of the lock cylinder.

\* pending, max. patent term to 2038

# HIGH-END SECURITY

Certified security elements



The security elements fitted as standard inside the magnetic cylinders ensure iron-clad security and provide protection against manipulation: The stainless steel bar is the key component of the system and provides increased protection against shattering and extraction. The high-strength stainless-steel anti-drill inlay and the hardened-steel elements in the cylinder housing and cylinder core offer increased protection against drilling.



Anti-drill protection



Anti-shatter protection



Anti-extraction protection



Anti-picking



3D copy protection



Anti-bump protection



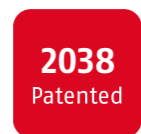
Magnetic element



Reversible key



Modular system



Patent term to 2038\*



SKG\*\*\* certificate



Security card



DIN EN 18252 certificate



EN 1303 certificate

# TECHNICAL DETAILS

Overview

System:	Bravus.3500 MX Magnet
Key:	Multiple paracentric reversible key made from hard-wearing nickel silver, incredibly stable
Key insertion:	Horizontal
Patent protection*:	✓
Trademark protection:	✓
Copy protection:	Intellitec system with multidimensional authorisation verification, magnet technology in the key and cylinder
Locking rows:	3
Total locking elements:	Up to 16
Modular design:	Standard for double, half and profile knob cylinders
Basic length:	30/30 mm in MX for Euro profile double cylinders
Length increments:	Extensions available in 5 mm increments
Security card:	✓
Lock security:	Class 6 in accordance with DIN EN 1303, details available on request
Attack resistance:	Grade B Grade D for Euro profile cylinders thanks to SKG*** certification
Fire resistance:	Grade B, T90
Product certification:	Certified to DIN 18252 and DIN EN 1303 standards, SKG*** certification as standard for Euro profile cylinders, available for other cylinders on request
Manufacturer certification:	ISO 9001
Production:	Made in Germany

\* pending, max. patent term to 2038\*

**ABUS | Pfaffenhain**  
**abus.com**

Fabrikstraße 1  
09387 Jahnsdorf  
Germany  
+49 37296 713-0  
vertrieb@abus-pfaffenhain.de

Technical and colour specifications subject to change without prior notice.  
No liability accepted for errors and printing errors. ABUS © 2021

Specialist dealer