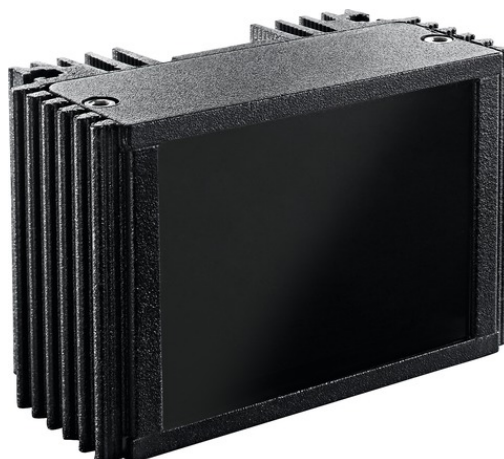


# IR Illuminator S – 850 nm, 30°, 20 m

Art.-Nr. TVAC71010

Seite 1 von 2



## More light - better images

In order to record clear images even in the dark, the cameras need (infrared) light. The semidiscreet S IR illuminator provides cameras with the light they need even in absolute darkness. The IR LEDs provide infrared light with a wavelength of 850 nm for night-time recordings. The IR illuminator is suitable for both black and white and day/night cameras.

## Also for use in extreme weather conditions

The range of the IR illuminator depends on the light sensitivity of the camera. At 0.1 lux, the range is about 20 metres, at 0.01 lux it is up to 40 metres. The radiation angle is 30° (horizontal). The S IR illuminator is dustproof and protected against strong jets of water (IP66). It can therefore be used without problems outdoors at temperatures between -30°C and +40°C. Its maximum power consumption is 6 watts.

## Automatic day/night switching - semidiscreet LEDs

Using its built-in photo sensor, the IR illuminator detects the onset of darkness and switches on automatically. When the brightness is sufficient, for example in daylight, it switches itself off. The S IR illuminator 850 nm 30° is a semidiscreet IR illuminator. The wavelength of this illuminator is approximately 880 nm, slightly shorter than the wavelength (940nm) of a discreet illuminator of the same type. The advantage of a semidiscreet illuminator is its greater range. Only in the immediate vicinity of the S illuminator is the reddish glow of its LEDs slightly visible.

The variable 12-24 AC/DC power input means the IR illuminator can be powered with an AC or DC supply.

## Technologies

- Integrated photo sensor for automatic activation and deactivation
- Variable power supply input 12-24 V AC/DC
- Semidiscreet for long ranges

# IR Illuminator S – 850 nm, 30°, 20 m

Art.-Nr. TVAC71010

Seite 2 von 2

- Range up to 20 m
- IP66 for indoors and outdoors

## Technical data - IR Illuminator S – 850 nm, 30°, 20 m

AC voltage supply	12 - 24 VAC V
Arming	< 3 Lux lx
Beam angle horizontal/vertical	30 °
DC voltage supply	12 - 24 VDC V
Dimensions	85 x 55 x 49 mm
Fastening	M6 thread
Height	49 mm
Housing material	Aluminium
IP protection class	66
Length	55 mm
Max. operating temperature	40 °C
Min. operating temperature	-30 °C
Net weight	0,35 kg
Optical Wave Length	850 nm
PSTI conformity required	No
Power consumption	500 mA
Range at 0.01 lux	20 m
Width	85 mm