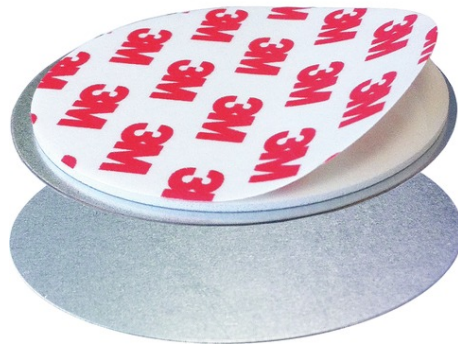


Magnet Fixing Set for Smoke Alarm Detectors

Art.-Nr. HSZU10000

Seite 1 von 1



The magnet fastening set offers an ideal alternative for smoke alarm device installation - without the need for screws and wall plugs. The set consists of a self-adhesive plate for mounting on the ceiling and a base element for mounting on the smoke alarm device, with the two magnetic parts holding the detector securely in place. This means that quick, easy and tidy installation is possible, without having to drill holes or use additional tools.

Technologies

- Fast and clean installation without drilling
- Easy attachment and removal of the smoke alarm device with magnet connection

Technical data - Magnet Fixing Set for Smoke Alarm Detectors

Dimensions	70x6 mm
Height	6 mm
Installation type	Ceiling
Max. humidity	90 %
Max. operating temperature	50 °C
Min. operating temperature	0 °C
Net weight	0,04 kg
PSTI conformity required	No
Width	70 mm