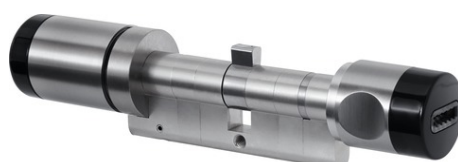


CodeLoxx Intrusion AE255F Proximity Panik Security

Art.-Nr. CLX-LPXA-EF-10-P

Seite 1 von 2



This premium electronic CodeLoxx cylinder provides more security, control and convenience at your door. It is operated using the read-protected ABUS Seccor chip key. A special advantage of this cylinder is the wireless module in the inside knob, which allows for incredibly easy operation of the alarm system and countless control functions in conjunction with the AE255F evaluation unit. The cylinder has additional plating for even greater protection against attempted break-ins. The unique modular extension system guarantees maximum flexibility during installation, use or structural changes.

Technologies

- Electronic double knob cylinder with chip key reader
- High-quality stainless steel knobs
- Permanent access possible
- Opening time adjustable between 6 and 12 seconds
- Additional reader for contactless transponder
- High tamper protection on the cylinder thanks to ABUS Security anti-drill cover
- Suitable for use with AE255F (3 m radio transmission) for arming/disarming intruder alarm systems
- Panic function: defined locking cam position

Technical data - CodeLoxx Intrusion AE255F Proximity Panik Security

Annual profiles	No
Area of application	Panic locks compliant with DIN179, which require a defined locking nose position, doors with PZ mortise lock
Colour	Stainless steel
Combination code	No
DC voltage supply	3 V
Drill protection	Security
Electronics	AE255F
Emergency power supply possible	Yes
Event memory	1000
Inner knob diameter	33 mm
Inner knob length	49 mm
Locking media	ABUS Seccor chip key EM4102, Hitag 1 and Hitag 2 transponder
Logging and time function	No

CodeLoxx Intrusion AE255F Proximity Panik Security

Art.-Nr. CLX-LPXA-EF-10-P

Seite 2 von 2

Technical data - CodeLoxx Intrusion AE255F Proximity Panik Security

Material	Stainless steel
Max. number of locking media	511
Max. operating temperature indoors	60 °C
Max. operating temperature outdoors	60 °C
Min. operating temperature indoors	-10 °C
Min. operating temperature outdoors	-20 °C
Modularly extendible	Yes
Opening time can be set	between 6 and 12 seconds
Outer knob diameter	30 mm
Outer knob length	39 mm
Permanent access	No
Programming	Via programming key and/or PELT or SKM with TG-SKM
Protection class IP Indoor	55
Protection class IP Outdoor	55
Reader type	Chip key reader and proximity reader
Signalling	optical
Special design axle	For doors with PZ perforation
Standard length	Length measurement when ordering
Weekly profiles	No
ZAAP	No