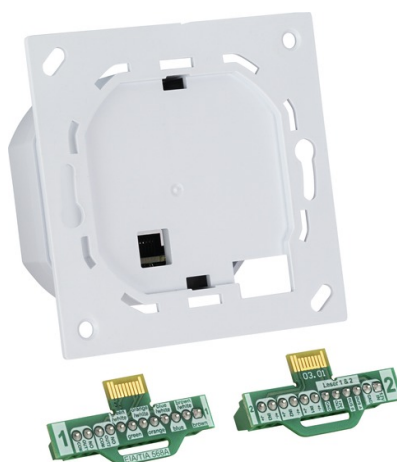


# TECTIQ Controller unit update terminal (in-wall)

Art.-Nr. TTS610000

Seite 1 von 3



SIMPLE. ACCESS. ORGANISATION. WITH THE DIGITAL TECTIQ LOCKING SYSTEM.

The update terminal controller unit is used in combination with the TECTIQ reader unit as an update terminal. In addition to the update terminal function, the device can also control an actuator for release, e.g. for opening a turnstile. The permission is checked when a locking medium is presented after updating. If the permission is valid, the controller unit activates the actuator and the employee can pass through the turnstile, for example, after updating their locking medium.

## TECTIQ update terminal with access function

The data from the TECTIQ locking media is synchronised with the access control center via the controller unit when validating/updating at the update terminal. The validity of the medium is extended and the permissions and data are updated. If the connection to the access control center is lost, secure continued operation is made possible temporary buffering (configurable time period) of the last saved authorisation data (network fallback). Secure and flexible: up to 100 TECTIQ update terminals can be integrated into a TECTIQ system across multiple locations via a secure Internet connection.

## Flexible installation, secure control

The separate installation of the reader unit (e.g. on the gate) and controller unit (inside) offers a high level of protection against tampering. The connection is established via the encrypted RS485 bus (up to 250 m cable length); the controller unit and network cable are not accessible from the outside.

## Efficient software administration

# TECTIQ Controller unit update terminal (in-wall)

Art.-Nr. TTS610000

Seite 2 von 3

Setup and programming are carried out conveniently in the Access Manager software. Data transfer (incl. maintenance, FW update) to the controller unit is also carried out remotely via LAN or the internet (online).

## Technologies

- Update terminal controller unit for combination with the TECTIQ reader unit, for validating and updating permissions on locking media and for simultaneous activation of electronic door and gate drives and other actuators
- Direct communication with the TECTIQ access control center via Ethernet for validating, updating and transferring permissions, battery warnings, logs, etc.
- Property-specific solution: cross-location connection of up to 100 TECTIQ update terminals to the TECTIQ access control center via a secure peer-to-peer connection
- Secure continued operation if the connection to the TECTIQ access control center is lost thanks to temporary buffering (configurable time period) of the last authorisation data (network fallback)
- Simple configuration of the relay output of the control unit in the TECTIQ Access Manager management software, depending on the electronic actuator and desired actuation (NO, NO pulse; NC, NC pulse)
- Activation of Office Mode for permanent control of electronic actuators (e.g. entrance gate remains open during business hours)
- Remote mounting: high tamper protection with locally separate installation of controller and reader unit, connected via encrypted RS485 bus, up to 250 m cable length (control/network cable inaccessible from outside)
- Compact installation: simple mounting of the reader unit directly on the controller unit, which is installed in the flush-mounted box
- Installation in flush-mounted box or in IP-protected surface-mounted housing
- PoE power supply or alternatively via 12 V DC possible

## Technical data - TECTIQ Controller unit update terminal (in-wall)

Administration	Access Manager software
Area of application	Activation of electronic door and access control systems (e.g. electric door opener, motorised locks, gate and barrier systems) and other actuators
Cabling	Up to 100 m distance between control unit and Ethernet adapter, up to 250 m distance between control unit and reader unit (4 x 0.34 mm <sup>2</sup> , shielded)
Certifications	-
Clock buffering for power failure	Max. 3 hours
Colour	Signal white (RAL9003)
Communication protocols	TCP/IP, peer-to-peer mediation server
Connections	Two plug-in connection terminals
DC voltage supply	(terminal 1/connection 1 - 8) PoE IEEE 802.3af or (terminal 2/connection 13 - 14) external 12 V
Default IP settings	DHCP

# TECTIQ Controller unit update terminal (in-wall)

Art.-Nr. TTS610000

Seite 3 von 3

## Technical data - TECTIQ Controller unit update terminal (in-wall)

Depth	47 mm
Ethernet interface	Terminal 1/connection 1 - 8 (see mounting instructions)
Factory reset	Yes
Height	71 mm
Humidity	Max. 80 % relative humidity, non-condensing %
IP protection class	20
Inputs	0
Installation type	Indoor, in dia. 60 mm flush-mounted or cavity wall appliance junction boxes with a minimum internal depth of 53 mm (66 mm recommended) or in surface-mounted industrial housings (to DIN VDE 0606, DIN VDE 0471, DIN IEC 695)
Interfaces	RS485, Micro-USB, Ethernet/PoE, relay output
Item abbreviation	TEC-SG-UP-ON
Material	Plastic
Max. Power consumption	100 mA/1.0 W (update terminal control unit without actuator/reader unit)
Max. operating temperature	60 °C
Min. operating temperature	-20 °C
Net weight	0,071 kg
Network failure protection	Intermediate buffering of data and continued operation without a network connection for a predefined period of time (can be set on the software side)
Number of wall readers	One reader unit per control unit
Opening time can be set	Yes (1, 2, 4, 6, 8 or 12 s)
Programming	Access Manager, parameter card
RFID technology	No interface, operation via the reader unit
RS-485 interface	Connection of an external reader unit to terminal 2/connection 15-18: Bus A, Bus B, 12 V DC and GND. Setting for number of reader units: via slide switch on the control unit
Real-time clock (RTC)	Yes
Relay configuration	Bistable relay: NO, NC, NO pulse, NC pulse
Relay outputs	One potential-free relay output, dielectric strength: 60 V DC, 50 V AC, current carrying capacity: 1 A DC, 1 A AC
Security features	End-to-end encrypted data transmission via RS485 between control unit and reader unit, separate installation of control unit and reader unit possible
Signalling	Visual and optional acoustic signalling via the reader unit
Special functions	Office Mode for permanent activation of the locking element, e.g. during business hours
Storage type	Circular buffer: 10,000 events
Update capability	Yes, via network
Validation intervals	Freely configurable (in the TECTIQ Access Manager)
Width	71 mm