



Security Tech Germany

**WAPPLOXX PRO PLUS**

**SIMPLE. ACCESS.  
ORGANISATION.**

Digital locking technology for commercial properties and public facilities



**1.000 USERS | 160 DOORS | 1 SYSTEM**



Iron Rock

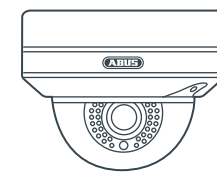
1924

# MAKING LIFE A LITTLE SAFER

## SECURITY SINCE 1924

Since the development of the legendary "Iron Rock" padlock, ABUS has stood for security, stability and quality. Characteristics that still reflect the company's philosophy and have become the precursors to the digital locking technology from ABUS.

The wAppLoxx Pro Plus system continues the success story of the wAppLoxx. And offers more of everything: more doors, more users, more performance. This makes it the optimal solution for equipping commercial properties. It far exceeds a conventional wAppLoxx Pro installation in scope, function and performance features.



Video  
surveillance



Alarm



CodeLoxx



wAppLoxx  
Pro Plus

Today

# THE WLX PRO PLUS FOR COMMERCIAL PROPERTIES

WLX Pro Plus opens the door to larger projects:  
In terms of system scope, functionality and flexibility  
WLX Pro Plus is the platform for your customised access solution.

## 5 X 32 = 160 DOOR COMPONENTS

WLX Pro PLUS system scaling with the combination (cascading) of up to 5 WLX Pro Plus Controls with a maximum of 32 door components each in the master/slave principle via the local network to a total of 160 door components

## LOCKING PLAN MATRIX

Quick assignment of access authorisations in the clear locking plan matrix for up to 160 door and 100 user groups

## 10 ABUS IP CAMERAS

With the integration of up to 10 ABUS IP cameras, access can be verified via app with live image view or used as a response in the event control

## COMPATIBILITY WITH WLX 1.0

Combine both technologies with the system-open variant and combine WLX 1.0 with WLX Pro technology - – e.g.: for upgrading existing systems or expansion

## DUPLEX ANTENNAS 868 MHZ

Stable and encrypted radio connection thanks to duplex antenna technology. Optional radio amplification with WLX Pro repeater or connection of external power antennas offers maximum flexibility in project planning

## WLX PRO PLUS MANAGER

Fast and intuitive programming, management and control of the entire WLX Pro Plus system with the integrated locking system software in real time

## LED DISPLAY

Status LEDs for signalling smooth operation or present system messages at a glance

## 2 BURGLAR ALARM LOCATIONS OR SECURITY AREAS

Control of up to two burglar alarm systems or security areas directly on the WLX door component, in the app or in the software

**1.000 USERS  
160 DOORS  
1 SYSTEM**



ACC016000

Meets the requirements of medium-sized and larger companies: the innovative, radio-networked all-in-one solution consisting of high-quality hardware and intuitive software. With simple locking rights management and app access, networked with alarm and video.  
**Secure. Comfortable. Digital.**

# WAPPLOXX PRO PLUS

**WLX PRO PLUS MANAGER**  
Central locking system software

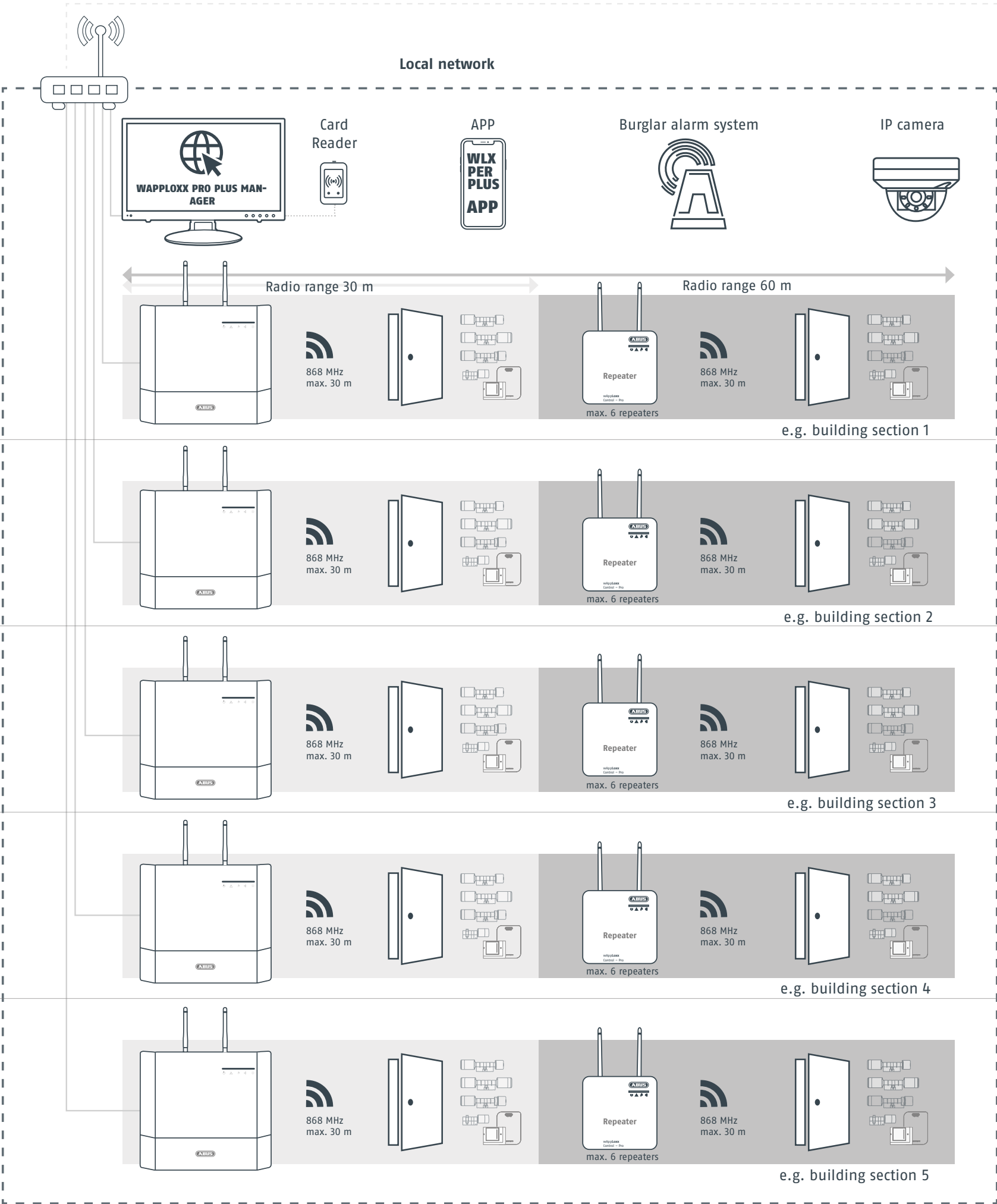
**WLX Pro Plus Control: Master**  
1,000 users  
32 door components  
Management of the entire system

**WLX Pro Plus Control: Slave 1**  
+ 32 door components  
= 64 door components (master)

**WLX Pro Plus Control: Slave 2**  
+ 32 door components  
= 96 door components (master)

**WLX Pro Plus Control: Slave 3**  
+ 32 door components  
= 128 door components (master)

**WLX Pro Plus Control: Slave 4**  
+ 32 door components  
= 160 door components (master)

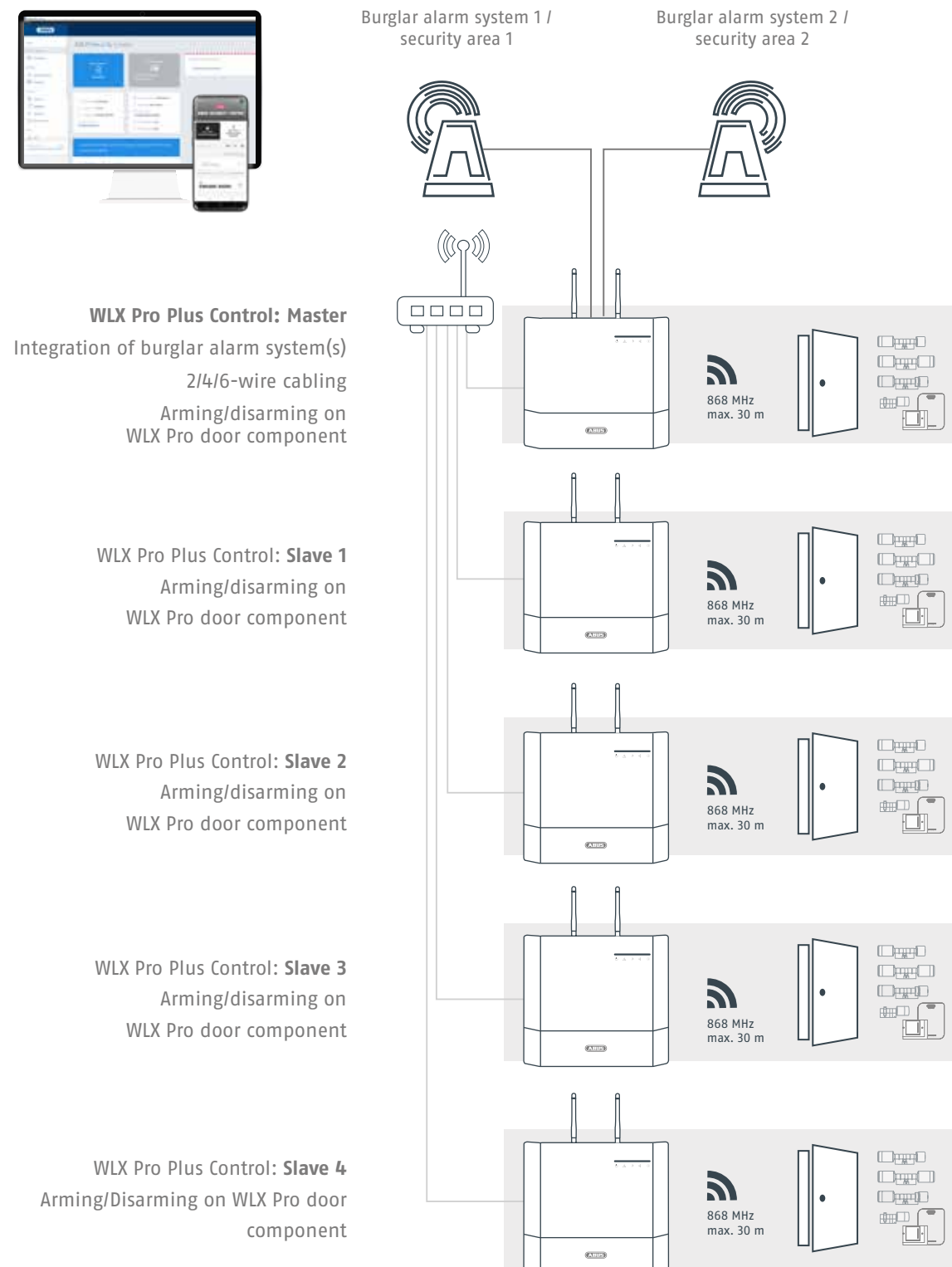


With the integrated software, the wAppLoxx Pro Plus Manager, you can manage your system conveniently and efficiently. Consisting of up to 5 control units that work together in master/slave mode (1 basic system + 4 additional controls). The radio-based system optimally covers all parts of the building with controls that can be freely placed in the building (for 32 door components each, expandable by 6 repeaters each). Whether in the local network or via remote access - all door components, authorisations, alarm systems and IP cameras are managed in the software. In addition, users can access the system via app based on their authorisation.

**160 DOORS** = 5 x 32  
**1.000 USERS**  
**1 SYSTEM**



# WAPPLOXX PRO PLUS AND BURGLAR ALARM SYSTEMS



- Integration and control of up to **two burglar detection systems** or **two security areas**
- **Arming/disarming** of the respective system or security area as an authorised user **directly on the WLX Pro door component, in the WLX PRO PLUS app or in the Access Manager**
- **Convenient, secure operation** thanks to optimal system combination - inevitably false-alarm-proof





# WAPPLOXX PRO PLUS AND ABUS IP CAMERAS

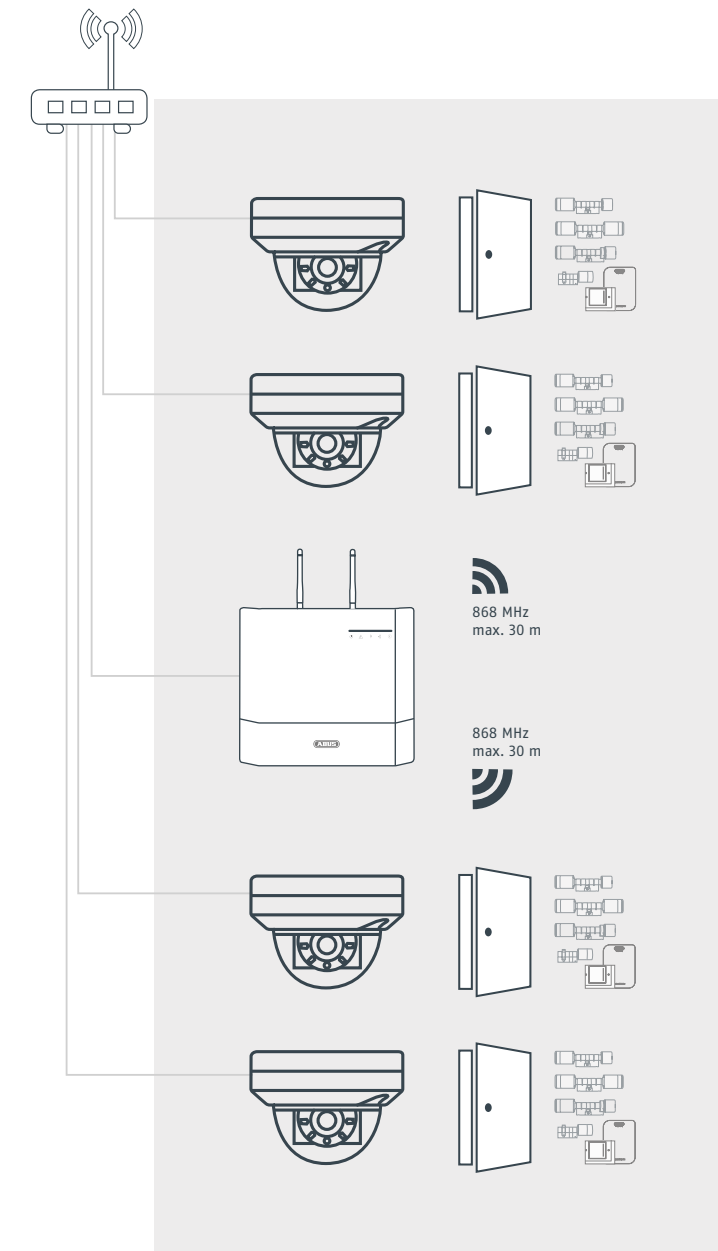


## WLX Pro Plus Control: Master

Integration of up  
to 10 ABUS IP cameras

Integration into the  
local network

Linking of  
door and camera in  
WLX PRO PLUS MANAGER



- **Simple integration of up to 10 ABUS IP cameras** via the local network, automatic transmission via PtP switching server to the WLX PRO PLUS APP
- **Live image view of the respective ABUS IP camera** for remote releases via the WLX PRO PLUS APP a combined door component
- **Triggering of integrated ABUS IP cameras as a reaction in the WLX Pro Plus event control**, for example in the event of invalid access attempts



# WAPPLOXX PRO PLUS MANAGER

The integrated software is the control centre for setting up, managing and maintaining the entire locking system. Its high-performance logic accurately handles commands and rights changes - for efficient, time-saving use. The free software can be run on any number of PCs and saves administrators time, money and worry.

## DASHBOARD

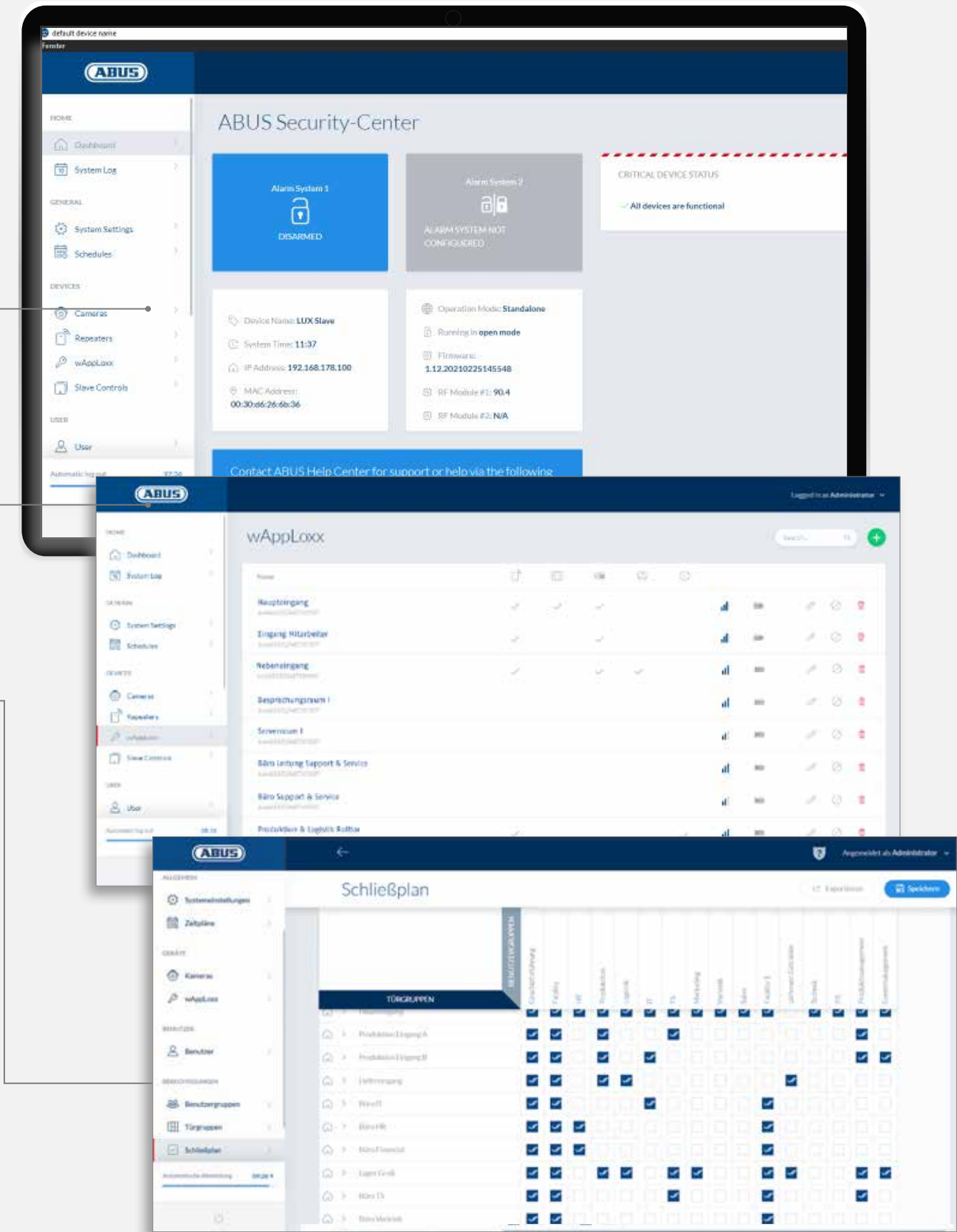
In the Dashboard, the administrator has a complete overview of the locking system. They are aware of all components, their status and maintenance condition and recognise any need for action immediately.

## DOOR COMPONENTS

This view clearly lists all door components (cylinders, wall readers, etc.). Thanks to the status display (radio strength, battery status, etc.), problems can be localised quickly and maintenance intervals can be optimally planned.

## LOCKING PLAN MATRIX

The intuitive overview allows locking rights to be quickly assigned. Doors, users and schedules are combined into logical access groups, e.g. "shift worker", "external cleaner", etc.

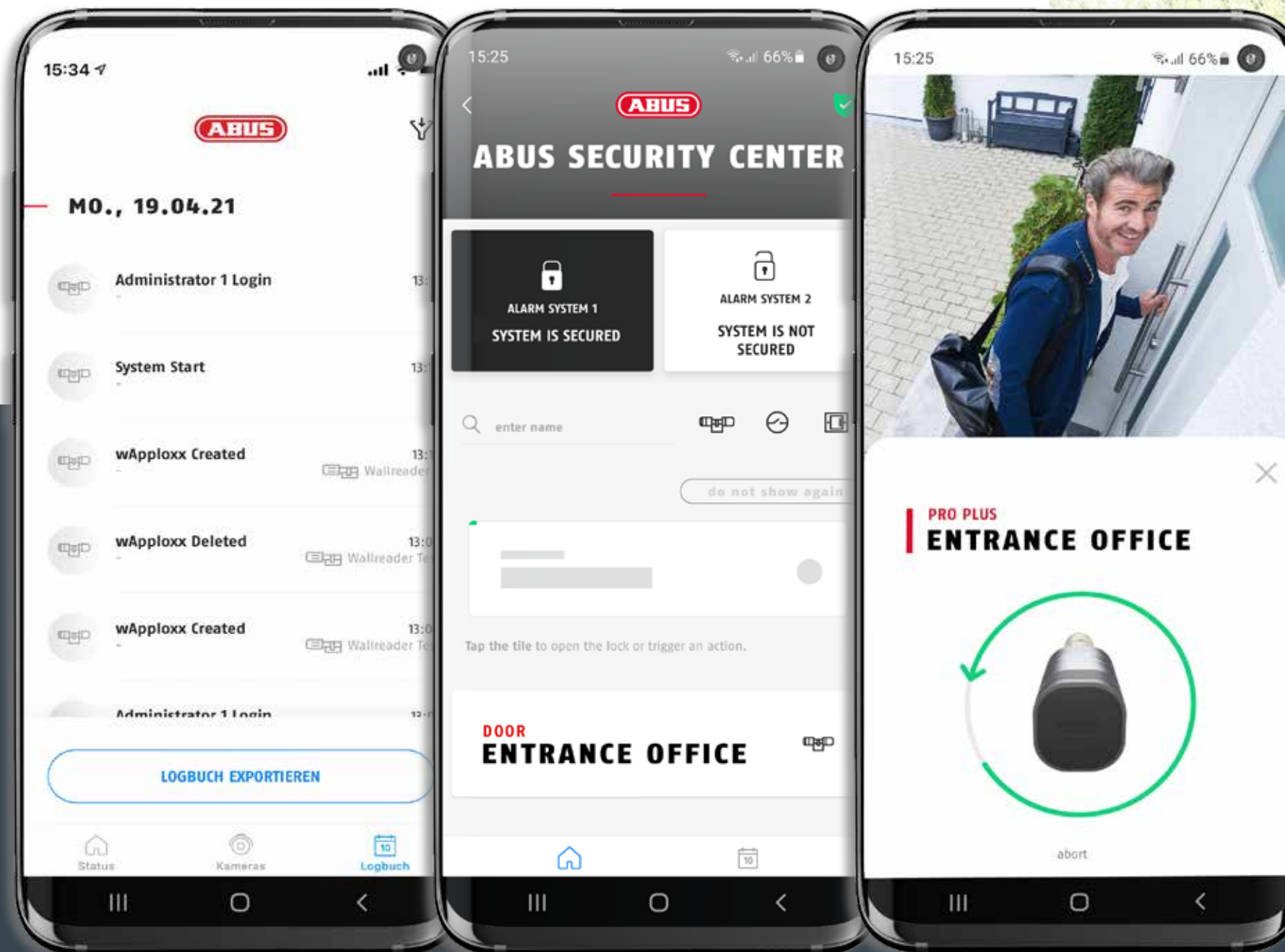


A glance at the matrix is all you need - for a full overview: In the locking plan, doors and users are combined into individual groups and displayed in an easy-to-read table.



# WAPPLOXX PRO PLUS APP

As mobile and flexible as you are: The user-friendly app turns your smartphone into a fully-fledged locking medium with which an authorised user can open doors. In addition, access release of doors is also possible conveniently and securely while on the move. Including live access to integrated cameras or the operation of a burglar alarm system. Convenience functions such as automated favourites or personalisation with your own pictures make operation easier. The high-performance app ensures an extremely fast connection setup for secure, encrypted communication, in accordance with the highest data security requirements.



- Locking medium: release the door via smartphone - directly on WLX PRO door components or via remote access from a distance
- Automatic favourites (frequent use) and fast connection setup for efficient work and maximum ease of use
- Display of live images from integrated cameras incl. snapshot function
- Arming/disarming of connected BASs - inevitably false-alarm-proof
- Access to all logbook entries and easy exporting
- App can be individually personalised with your own pictures and labels
- Secure peer-to-peer connection (P2P) and encrypted local connection (Secure LAN Connection) ensure protected communication



Laden im  
**App Store**

JETZT BEI  
**Google Play**



# INTELLIGENT EVENT CONTROL

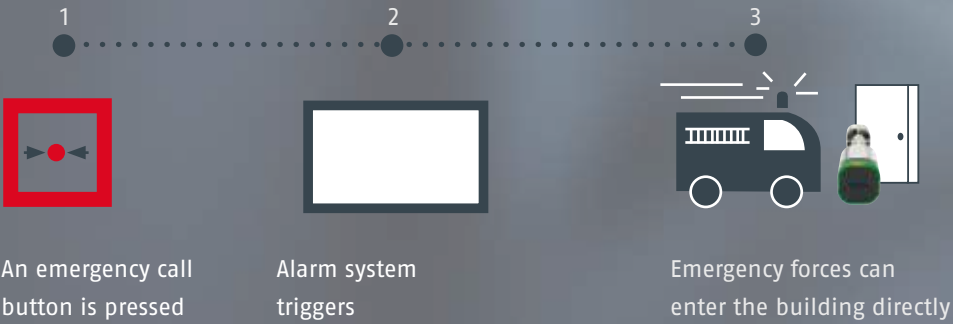
wAppLoxx Pro Plus offers flexible and sophisticated event control. In addition to pure access management, other events can be controlled in this way that effectively increase convenience, security or operational stability. The various event scenarios with the wAppLoxx Pro Plus include, for example: sending an e-mail when the battery level of a cylinder is low, sending still images (snapshots) of an integrated ABUS IP camera in the event of an invalid access attempt or immediate access (without presenting a tag/transponder), for example after an alarm system has been triggered by an emergency call button.

Example 1



Example 2

Automatic access release without transponder in case of alarm



# WAPPLOXX PRO CYLINDER



Colour variants      Round knob

## DESIGN

The colour of the wAppLoxx Pro cylinder can be adjusted for any door and surface with its grey or black covers.

## MODULAR

Extension modules enable individual length adjustment to up to 90 mm on each side.

## SAFE

The high protection against manipulation with extra-reinforced drilling and pulling protection as well as a read-protected wireless connection highlight the security of the wAppLoxx Pro Cylinder.

WLX Pro Double-knob cylinder  
WLX-PRO-LA



WLX Pro double knob cylinder  
reader on both sides  
WLX-PRO-LB



WLX Pro Double-knob cylinder  
for escape doors  
WLX-PRO-LA-P



WLX Pro Half cylinder  
WLX-PRO-HZ



WLX Pro Padlock  
WLX-PRO-VH-86TI-55-W

# WAPPLOXX PRO WALL READER

The wAppLoxx Pro wall reader ideally complements the system's fields of application with locking technology, e.g. for operating electric door openers or motorised locks. The high-quality, scratch-resistant glass front serves to identify access authorisations by reading in the locking medium and provides feedback to the user in the form of visual and acoustic signals. A system consists of the wall reader itself (reader unit) and a bridge box (control unit). Attaching the bridgebox in a secured indoor area means there is no attack surface on the reader unit outside for manipulation attempts.



## INCREASED RECEPTION

The duplex antenna technology and the ability to connect external power antennas provide high flexibility when selecting the installation location.

## WIRELESS EXPANSION

Up to 6 repeaters can be used per wAppLoxx Pro Control.

## GREATER RANGE

The wireless range between the control and the door components can be extended up to 60 m using the wAppLoxx Pro Repeater.



# WAPPLOXX PRO REPEATER





# WAPLOXX PRO TAGS

wAppLoxx Pro tags enable contactless access within the locking system. With their robust quality, the ID tags (Mifare Desfire EV1) are suitable for indoor and outdoor use. The wAppLoxx Pro transponders are available in different colours and can also be numbered consecutively. Transponder cards and the wAppLoxx Pro Plus App can also be used as tags.

## WAPLOXX PRO ACCESSORIES:

The matching accessories make it easier for you to plan out your system. Whether you need more range for optimal placement of the control unit, efficient programming of locking media on the PC or an emergency power supply for the repeater.



### WUX Pro Card Reader

- Central programming of wAppLoxx Pro tags directly on the PC
- Remote programming of wAppLoxx Pro tags regardless of location
- Visual and acoustic signals



### External Power Antenna WUX Pro

- Ideal for signal amplification and range extension
- Enables flexible mounting (e.g. outside server room, use under suspended ceilings)



### Battery pack for WUX Pro Repeater

- Backup power supply
- Ideally suited for the walktest



# WAPLOXX PRO AND CAMERA INTEGRATION

Keep an eye on who enters and leaves with video verification, confirm and log access via video image. If an employee enters a sensitive area (e.g. server room), the respective camera starts recording or sends a snapshot. The live images from the cameras can also be accessed at any time.

From the efficient entry-level camera to the professional model with 4K resolution: Select ABUS IP cameras with alarm function work perfectly with the wAppLoxx Pro Plus system. Up to 10 cameras can be integrated per system. All you need to do is enter the local connection data into the wAppLoxx Pro Plus Manager (control software) - without any connection to an external server.

## COMPATIBLE CAMERAS:

A list of recommended camera models is available for download. To do this, go to the product page for the WUX Pro Plus Control at [abus.com/product/ACC016000](https://abus.com/product/ACC016000) and download the PDF under the "Downloads" tab.



# ELECTRONICS + MECHANICS = 1 SYSTEM

## HYBRID LOCKING SYSTEMS

### THE BEST SOLUTION OF ELECTRONICS & MECHANICS

When modernising or expanding the locking system in an existing building, an extension or a new part of a building, for example, the question of the right retrofit or technology mix arises.

New parts of the building or important doors receive digital access management. Should other doors or gates keep their cylinder or a motorised lock? Hybrid locking systems from ABUS combine all technologies: The transponder cap on the key switches the WLX PRO cylinder at the entrance door and the motorised lock via the wall reader, while the key bit opens the interior doors mechanically.

### YOUR BENEFITS:

- Low investment costs due to optimum mix of cylinders (retrofit)
- Important doors are equipped with WLX Pro door components (logging, key loss, video verification etc.)
- Standard doors can keep their mechanical cylinders



### A KEY FOR YOUR BUILDING



A wide range of cylinder types offers individual solutions for all the requirements of small to very large locking systems. Whether you want to lock a security door, control a lift or implement another application, we offer you the right cylinder for every door with our range, all with one key.

This allows you to react flexibly to changes in building structure, ABUS locking systems can be expanded at any time and components or functions can be added even years after installation.



### MECHANICS AND ELECTRONICS INTELLIGENTLY COMBINED

The ABUS modular system of mechanical and electronic cylinders and numerous additional modules offers you everything you need to secure your property with a perfect fit. Thanks to the transponder in the key cap, you can operate mechanical and electronic cylinders as well as other electronic components with just one medium. In your company, for example, you lock the office door with the double cylinder and use the same key to control selected electronic cylinders, the alarm system, car park barriers or record your working hours.



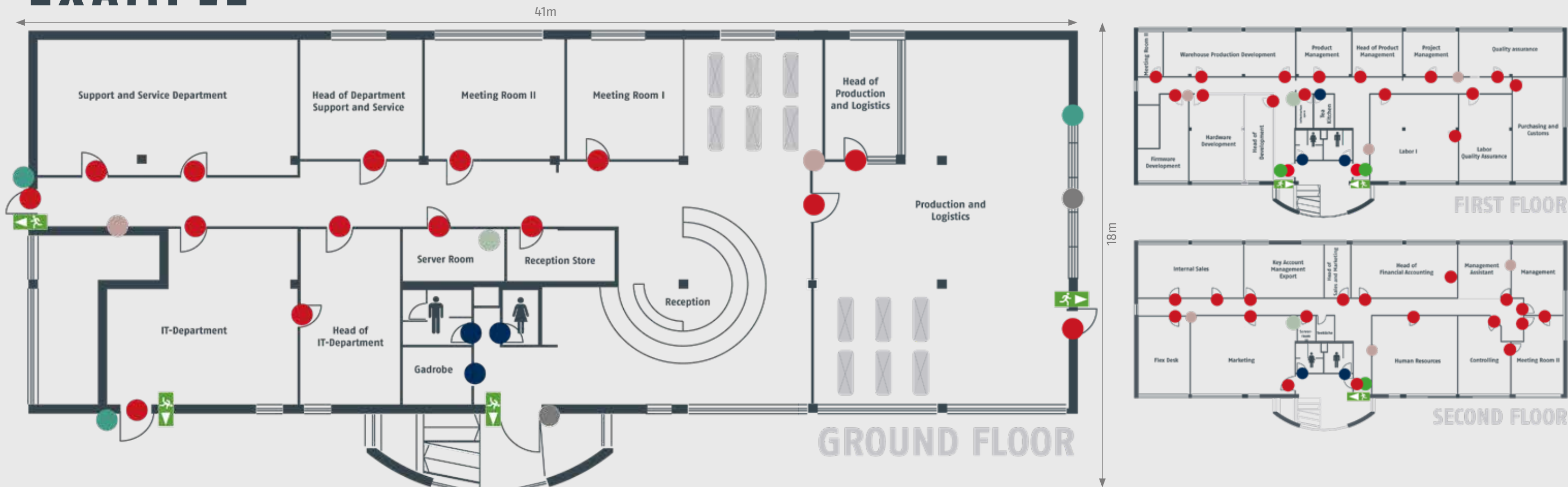
### PROTECTION AGAINST CYLINDER TAMPERING AND ILLEGAL 3D KEY COPIES

The Bravus MX Magnet mechanical locking system offers you security at the highest level - thanks to the integrated magnet technology, the standard SKG security equipment, the technical copy protection, patent protection until 2037\* and brand protection. This is because the intelligent magnet technology and the patented Intellitec system on the key and in the cylinder very effectively prevent an unauthorised key from being used in the locking process. In addition, the security elements inside the magnetic cylinder provide steel-hard security as standard and protect you against cylinder tampering.

\*max. patent term 2037



# INSTALLATION EXAMPLE



## HYBRID SOLUTION FOR EDP/IT DISTRIBUTOR (EXAMPLE COMPANY)

### BACKGROUND TO THE REQUEST: RENEWAL OF THE MECHANICAL LOCKING SYSTEM

- Mechanical keys in circulation without assignment to an employee
- Lost keys cannot be ruled out
- Relatively high subsequent delivery conditions for new keys or matching locking cylinders

### REQUIREMENTS AND WISHES FOR THE NEW LOCKING SYSTEM:

- Central assignment of new locking rights with time-defined access rights
- An app as a locking medium for managers
- An app for unlocking doors even when on the go
- Flexible and cost-effective issue of new tags
- Quick response in case of lost tag
- Office functions (permanent access) for doors as at the main entrance
- Expandable and extendable access system from a brand manufacturer

wAppLoxx Pro Plus is the ideal system for our example company. All requirements and wishes are fulfilled with the many added values from access. Through competent advice, with the presentation based on the sample case and answers to questions, the management, the IT department management and the facility management is completely won over.



WLX PRO  
Cylinders



WLX PRO  
Repeater



WLX PRO PLUS  
Control



ABUS IP  
camera

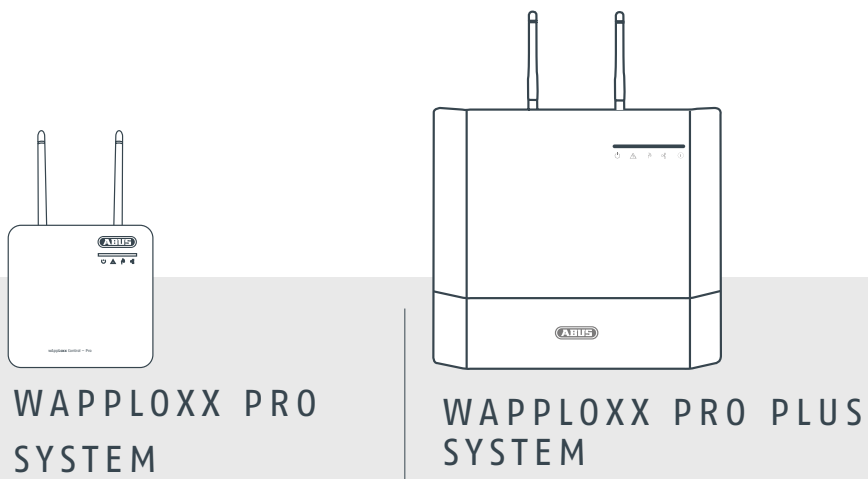


WLX PRO  
Wall reader



Mechanical  
cylinder

# SYSTEM COMPARISON



|                                      | WAPPLOXX PRO SYSTEM      | WAPPLOXX PRO PLUS SYSTEM      |
|--------------------------------------|--------------------------|-------------------------------|
| USERS                                | up to 500 users          | up to 1,000 users             |
| WLX WIRELESS DOOR COMPONENTS         | 32 x door components     | (32 x 5) 160 door components  |
| REPEATER                             | up to 6 repeaters        | up to 30 repeaters (6 x 5)    |
| LOGBOOK ENTRIES                      | 5,000                    | 100,000                       |
| DOOR GROUPS                          | 32                       | 160                           |
| USER GROUPS                          | 50                       | 100                           |
| INTEGRATION OF BURGLAR ALARM SYSTEMS | 1 x BAS                  | 2 x BAS                       |
| E-MAIL DISPATCH                      | SMTP                     | automatic                     |
| APP                                  | WLX PRO ✓                | WLX PRO plus ✓                |
| AREAS OF USAGE                       | PRIVATE & SMALL BUSINESS | COMPANY / PUBLIC INSTITUTIONS |



## ACADEMY

The **joy of learning** is the motto that every course at the ABUS Security Center Academy embraces. Whether for alarm and burglar detection technology, video surveillance or access control systems: We always pay attention to balanced learning units with a lot of practical relevance, which ensure quick and easy transfer of knowledge.

[academy.abus-sc.com](http://academy.abus-sc.com)



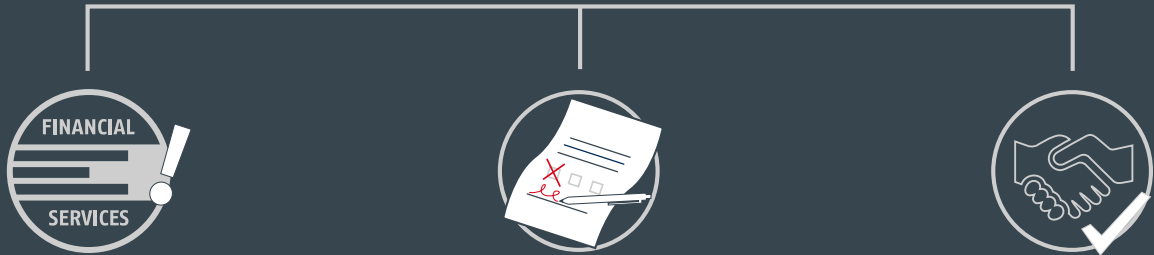
## TECHNICAL SUPPORT

If you have any technical questions, you can reach your personal contact at **+49 82 07 959 90-802** and get support right on the phone. For complex projects or troubleshooting, Technical Field Support provides additional support directly on site when required. For example, for special environmental conditions, demanding project planning or the commissioning of networked ABUS products.



## FINANCIAL SERVICES

3 steps  
to improved performance



Find out more about  
ABUS Financial services

Contact your finance partner  
and request a contract

Start cooperation and  
generate more turnover





**ABUS | Nederland BV**  
**abus.com**

---

Beresteinseweg 4  
1217 TJ Hilversum  
+31 (0) 35 621 00 61  
info.nl@abus-sc.com