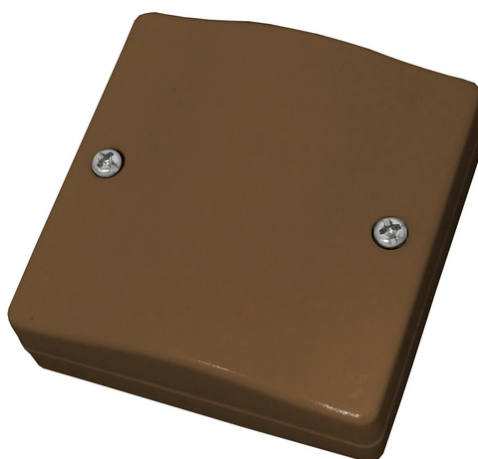


Screw Terminal Distributor Flush Mount, 12-pins (brown)

Art.-Nr. VT5101B

Seite 1 von 1



With a screw terminal distributor flush mount, you provide wiring that is clear and easy to understand. Particularly if you install several control panels and sensors, you should fit distributors at the intersections of your building. The surface-mounted screw distributor is tamper-protected by a cover contact. It is produced in white and brown, with 5 (VT5000) and 8 (VT5100) double screw connections. The respective screw terminal distributor flush mount is made of shock-resistant plastic.

Technologies

- Simple surface installation
- Fast wiring due to screw clamps
- Shock-resistant plastic
- Cover contact
- High-quality finish for professional installation

Technical data - Screw Terminal Distributor Flush Mount, 12-pins (brown)

Connections	12 screw connections
Dimensions	(WxHxD) 65x65x18 mm
Height	65 mm
Housing material	ABS
Installation location	Surface mounting
Length	18 mm
PSTI conformity required	No
Sabotage monitoring	Yes
Width	65 mm