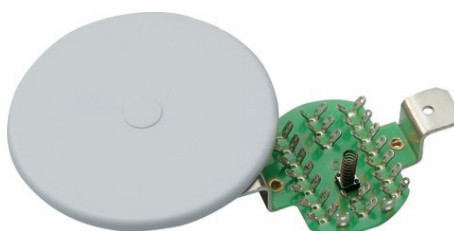


Terminal Distributor Flush Mount, 19-pins VdS C

Art.-Nr. VT4200W

Seite 1 von 1



With a terminal distributor surface mount, you provide wiring that is clear and easy to understand. Particularly if you install several control panels and sensors, you should fit distributors at the intersections of your building. The flush-mounted soldered distributor is tamper-protected by a cover contact. It is ideal for installation in 55 mm switch boxes. With a white plastic cover and a clip for the screw cover, it is practically invisible. The flush-mounted soldered distributor has 19 double solder contacts - all tin-plated and therefore rust-resistant. The flush-mounted soldered distributor is VdS certified.

Technologies

- Flush mounting
- Corrosion-proof, tin-coated solder contacts
- Plastic cover with clip
- Monitored for tampering by cover contact
- VdS C (G 105080)

Technical data - Terminal Distributor Flush Mount, 19-pins VdS C

Certifications	VdS C
Colour	white
Connections	19 solder terminals
Housing material	ABS
Installation location	Flush fitting
Length	50 mm
PSTI conformity required	No
Sabotage monitoring	Yes
VdS approval no.	G 105080
VdS class	C
Width	50 mm