

Installation instructions and user guide

wAppLoxx Repeater 1:1

Contents




1. General	3
1.1 Safety information.....	3
1.2 wAppLoxx Repeater technical data	5
2. wAppLoxx Repeater installation.....	6
3. wAppLoxx Repeater operating elements	7
4. Commissioning the wAppLoxx Repeater	8
1. Initialisation	8
2. Join process (pairing).....	9
3. Leave process (unpairing).....	11
4. Restarting the repeater	12

1. General

This product complies with current domestic and European regulations. Conformity has been certified, and all related certifications are available from the manufacturer on request. To ensure the condition of this product is maintained and that safe operation is guaranteed, this user guide must be observed. No part of the product may be changed or modified in any way. Finger contact with the electronics should also be avoided. ABUS Security-Center GmbH & Co. KG shall not be held liable for loss or damage caused – or alleged to have been caused – either directly or indirectly by this manual. We reserve the right to make changes to this manual without prior notice.

1.1 Safety information

Explanation of symbols:

	The triangular high voltage symbol is used to warn of the risk of injury or health hazards (e.g. caused by electric shock).
	The triangular warning symbol indicates important notes in this user guide which must be observed.
	This symbol indicates special tips and notes on the operation of the unit.

Safety information:



Please observe the following instructions for the wAppLoxx Repeater to avoid fire and injury:

- Mount the device securely in a dry area of the building.
- Ensure there is sufficient ventilation for the device.
- The device is designed for indoor use only.
- The maximum humidity must not exceed 80% (non-condensing).
- Ensure that no metal objects can be inserted into the device from the outside.
- Disconnect the device from the power supply before any installation work is carried out.
- The device is supplied with power via a separate power supply unit.
- The power supply unit is connected to the building's 230 V AC grid via a separately secured line.
- Connection to the building's grid is subject to the country's specific regulations.



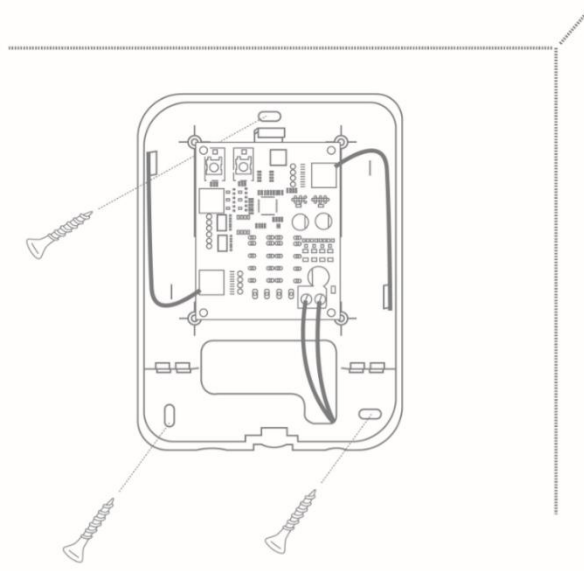
Information on the wireless range:

- The wireless range between the wAppLoxx Cylinder and the wAppLoxx Repeater is largely dependent on the individual local conditions, particularly the building structure and electromagnetic interferences (from machines, high-voltage lines, etc.). Extreme interference with the wireless traffic can lead to a four-minute safety shutdown.
- It is essential to check whether there is an adequate wireless connection prior to installation and commissioning.

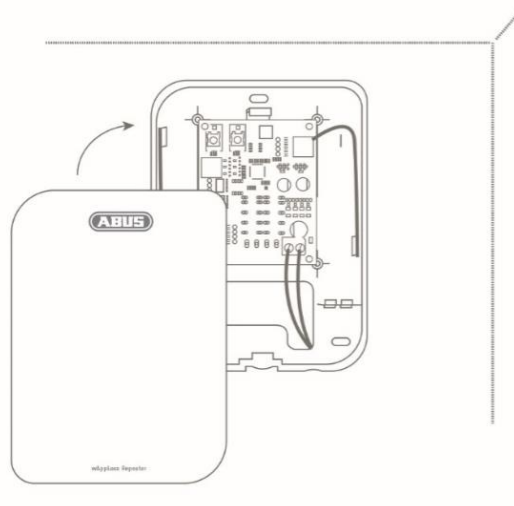
1.2 wAppLoxx Repeater technical data

Scope of delivery:	wAppLoxx Repeater, quick guide, 12 V DC power supply unit
Power supply:	12 V DC, 2 A, via external power source
Conditions of use:	Max. 80% relative humidity, non-condensing
Radio frequency:	868.3 MHz
Wireless range:	Approx. 30 metres indoors (100 m free field nominal)
Exterior dimensions:	135 x 100 x 30 mm (H x W x D)
Material:	White plastic housing
Door systems:	1
Functions:	Signal extension of a wAppLoxx Cylinder

2. wAppLoxx Repeater installation

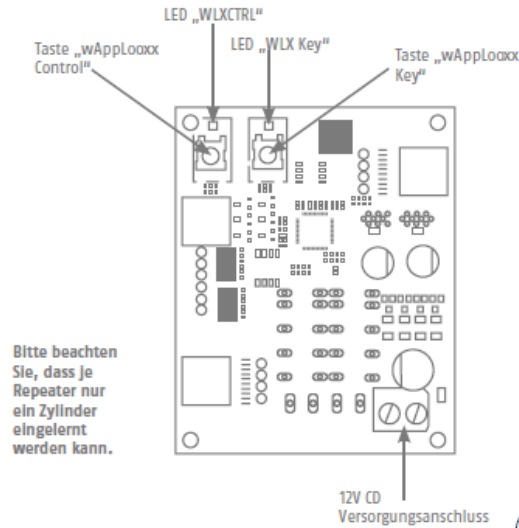


Mount the backplate on the wall, making sure that the PCB is not damaged in the process.



Mount the repeater cover to the underside using the fastening screw provided.

3. wAppLoxx Repeater operating elements



Power supply:

12 V DC – max. power consumption 250 mAh



Important: To ensure operation within the framework of CE approval, we recommend only using the original ABUS power supply unit. (Item no.: **AZZU10010/TVAC35201**).

We recommend switching to a new original ABUS power supply unit particularly in the event of problems with the power supply or if the existing power supply unit is defective.

4. Commissioning the wAppLoxx Repeater

1. Initialisation

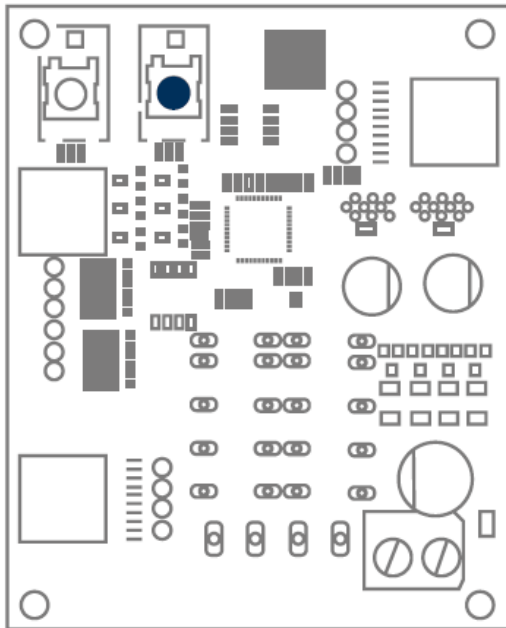
LED	Colour	LED behaviour	Description
Key	Red	Lit	Wireless stamp to PCB connection error
Key	Green	Lit	No wAppLoxx Cylinder programmed
Key	-	Off	No error/wAppLoxx Cylinder programmed
Key	White	Flashing	“KEY” button stuck
Key	Blue	Lit	No wireless connection to wAppLoxx Cylinder
WLXCTRL	Red	Lit	Wireless stamp to PCB connection error
WLXCTRL	Green	Lit	wAppLoxx Repeater not programmed into wAppLoxx Control
WLXCTRL	-	Off	No error/wAppLoxx Repeater PP programmed.
WLXCTRL	White	Flashing	“WLXCTRL” button stuck
WLXCTRL	Blue	Lit	No wireless connection to wAppLoxx Control

2. Join process (pairing)

During the join process, the wAppLoxx Cylinder must first be programmed into the wAppLoxx Repeater, as the relevant wAppLoxx Repeater simulates the wAppLoxx Cylinder and uses the device's address.



It is imperative that the sequence of the following steps is adhered to.



Programming wAppLoxx Cylinder into the wAppLoxx Repeater

To program a wAppLoxx Cylinder, hold down the “Key” button on the wAppLoxx Repeater for at least 3 seconds. The LED on the button lights up green.

Within 180 seconds, the wAppLoxx Cylinder can be programmed into the repeater by pressing the reset button on the cylinder (see wAppLoxx Control user guide)

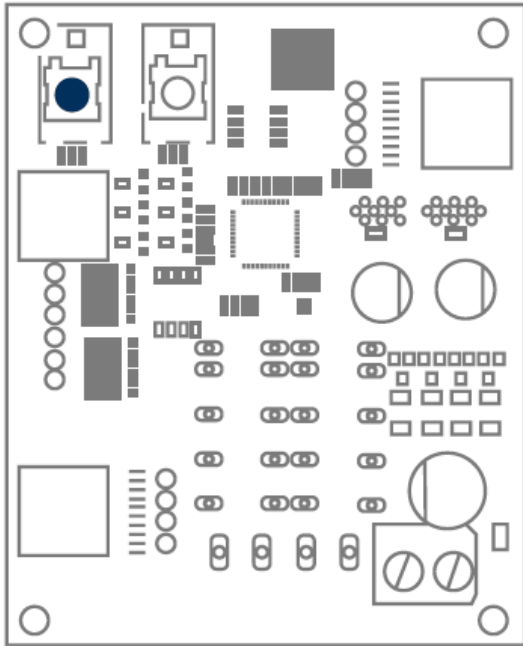
If no wAppLoxx Cylinder is programmed into the repeater within this time, the green LED goes out and the join process is terminated.

If a wAppLoxx Cylinder has successfully been programmed into the wAppLoxx Repeater within 180 seconds, this is confirmed by green flashing of the “Key” LED.



An error is indicated by the red flashing of the “WLXCTRL” LED and the process must be repeated.

The join process can be terminated early by briefly pressing the “Key” button.



Programming wAppLoxx Repeater into the wAppLoxx Control

To program the repeater into the wAppLoxx Control, the wAppLoxx Control must be in the programming mode for wAppLoxx Cylinders. (See wAppLoxx Control user guide)

After the wAppLoxx Control has been put in programming mode, the join process can be carried out on the repeater by holding down the “WLXCTRL” button for at least 13 seconds. The “WLXCTRL” LED will light up green after approx. 3 seconds.

As soon as the “WLXCTRL” LED flashes green, this indicates that the wAppLoxx Repeater has been successfully paired to the wAppLoxx Control.



An error is indicated by the “WLXCTRL” LED flashing red and the process must be repeated.



Please note that, when using a repeater, the function “Walk test” can only display the wireless strength from the wAppLoxx Control to the wAppLoxx Repeater. It is not possible to display the wireless strength from the wAppLoxx Cylinder to the wAppLoxx Repeater.



It is recommended to determine the wireless strength at the installation location of the repeater beforehand by means of the walk test. The wireless strength should in this case have at least two bars (sufficient).

3. Leave process (unpairing)

Using wAppLoxx Cylinder

If the leave process is initiated by pressing the reset button on the wAppLoxx Cylinder, the wAppLoxx Repeater is unpaired from the wAppLoxx Control.

Using wAppLoxx Repeater

“Key” button:

If the “Key” button is pressed for 3 seconds, the “Key” LED starts to flash red and the leave process is initiated. The button must be held down for about another 15 seconds until the “Key” LED flashes green. As soon as the wAppLoxx Repeater has been unpaired from the wAppLoxx Control, the programmed wAppLoxx Cylinder is deleted from the repeater at the same time. To reset the wAppLoxx Cylinder, press the reset button on the relevant cylinder.

“WLXCTRL” button

If the “WLXCTRL” button is pressed for 3 seconds, the “WLXCTRL” LED starts to flash red and the leave process is initiated. The “WLXCTRL” button must be held down until green flashing confirms that the repeater has been successfully unpaired from the wAppLoxx Control.

In contrast to unpairing using the “Key” button, the relevant wAppLoxx Cylinder remains stored in the wAppLoxx Repeater. This means that this wAppLoxx Repeater can be paired into a new wAppLoxx Control.

Using wAppLoxx Control

If a wAppLoxx Repeater is unpaired by Internet access via the wAppLoxx Control, the wAppLoxx Cylinder remains programmed in the wAppLoxx Repeater and can therefore be programmed into a new wAppLoxx.

The wAppLoxx Cylinder is unpaired from the relevant wAppLoxx Repeater as described above either by pressing the reset button on the wAppLoxx Cylinder or pressing the “Key” button on the wAppLoxx Repeater.

4. Restarting the repeater

To restart the repeater, press down both keys (Key and CTRL) for at least 5 seconds. All settings will remain unchanged.

Disposal



Devices displaying this symbol may not be disposed of with domestic waste. At the end of its service life, dispose of the product according to the applicable legal requirements.

Please contact your dealer or dispose of the products at the local collection point for electronic waste.

ABUS Security-Center GmbH & Co. KG

Linker Kreuthweg 5

86444 Affing

If you have any technical questions, please contact your specialist dealer.